



NORTHWEST FLORIDA  
STATE COLLEGE

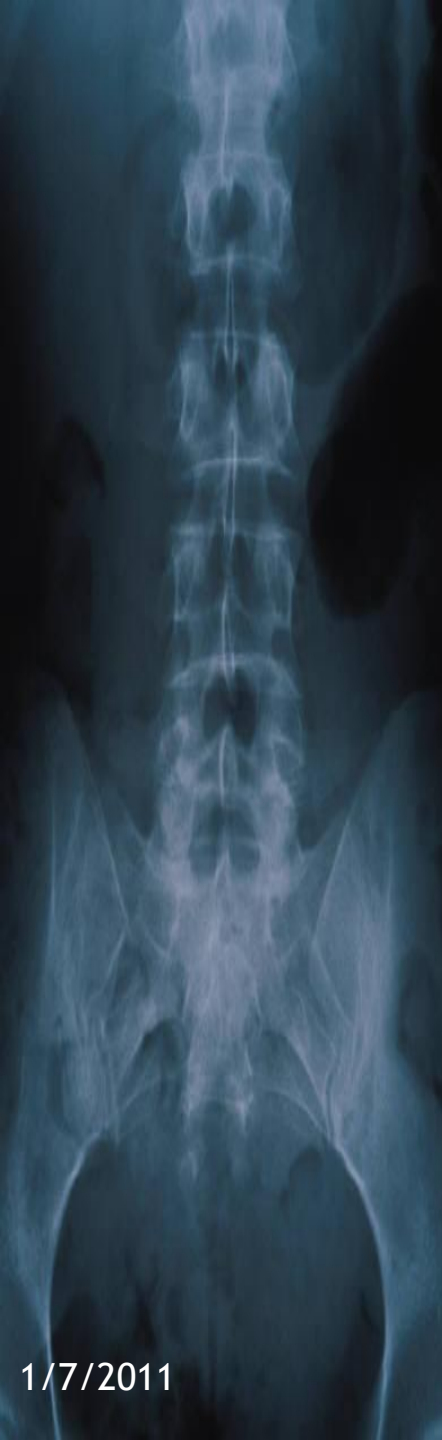
# Radiography Program


*Grace Stewart*

Clinical Coordinator

# Radiologic Technologists

Radiologic technologists use radiation to produce images of tissues, organs, bones, and vessels that comprise the human body. The radiographer is a skilled healthcare professional qualified to provide patient services using imaging modalities as directed by qualified physicians.





**Radiographers work in a variety of areas of Medical Imaging including general radiography, fluoroscopy, surgical radiography, trauma radiography, and pediatric radiography. With additional training and education, radiographers also perform computed tomography (CT), magnetic resonance imaging (MRI), ultrasound, nuclear medicine, positron emission tomography (PET), mammography, radiation oncology, and angiography / interventional exams.**



**Radiographers with advanced degrees may also work in hospital management, education, or sales / marketing. Radiographers also work in a variety of clinical settings, including hospitals, clinics, physician offices, and mobile units. To learn more about radiography, visit [www.asrt.org](http://www.asrt.org)**

An anteroposterior (AP) radiograph of the lumbar spine and pelvis. The image shows the vertebral bodies, intervertebral discs, and the bony structures of the pelvis. The spine is centered, and the pelvis is visible at the bottom of the frame.

# Student Radiographers

- Are in Clinic the first semester
- Perform radiographic examinations under direct supervision
- Are vital part of the health care team

# Our Energized lab

- State of the art CR equipment
- Radiography compatible manikin
- Radiopaque Phantoms





# Program Mission and Goals

Please visit our website at

[www.NWFSC.edu](http://www.NWFSC.edu)

## **Mission:**

- Provide quality affordable education
- Use theory and performance based instruction
- Critical Thinking
- Problem Solving
- Communication



# Accreditation

The NWFSC Radiography Program is currently accredited by the Southern Association of Colleges and Schools (SACS).

--- ARRT certifying examination eligibility

--- NWFSC reserves right to refuse exam participation due to unsatisfactory scholastic or clinical achievement



# Degree/Certification & Program Length

2 year program

5 semesters

Fulltime didactic & clinical  
courses





# Admissions

Please visit our website for the current admissions process.

[www.NWFSC.edu/radiography](http://www.NWFSC.edu/radiography)

Using the online application process, students may apply to other health programs by using only one application.



# Ethical Requirements

## **ETHICAL BEHAVIOR ELIGIBILITY REQUIREMENT**

The American Registry of Radiologic Technologists (ARRT.com) ethical behavior eligibility requirements specify that every applicant for certification must "be a person of good moral character and must not have engaged in conduct that is inconsistent with the ARRT Rules of Ethics," and they must "agree to comply with the ARRT Rules and Regulations and the ARRT Standards and the ARRT Standards of Ethics."

**\*\*** Applicants should be aware of this limitation on certification prior to entering the Radiologic Technology Program. Practice of Deceit in the application procedure is cause for dismissal from the Program.



# Ethical Requirements Continued

One issue addressed by the Rules of Ethics is the conviction of a crime, including a felony, a gross misdemeanor or a misdemeanor, with the sole exception of speeding and parking violations. ***All alcohol and/or drug related violations must be reported.*** Conviction as used in this provision includes a criminal proceeding where the individual enters a plea of guilty or nolo contendere. All potential violations must be investigated by the ARRT in order to determine eligibility. Further information may be found at [www.rrt.org](http://www.rrt.org) in the **ETHICS** section.



# Tuition and Fees

(The following items and estimates and subject to change)

Description	Cost
Lab Fees	\$168.00
Florida Resident Tuition	\$4526.06
Uniforms	\$200.00
Lead Marker	\$25.65
Textbooks	\$1200.00
Physical Examination	\$175.00
Hepatitis Immunization (3 @ 50.00 each)	\$150.00
Varicella Titer	\$140.00
School Pin	\$75.00
Background checks and Drug Screen	\$100.00
<b>Total</b>	<b>\$6759.71</b>



-- Generally between \$30,000 \$40,000 annually for full-time work in this area.

-- overtime, shift differential, and specialization pay varies slightly higher

--Job searches are available through local and national facility websites



# Performance Standards

Communication

Hearing

Interaction

Mobility

Problem Solving

Motor Skills

Self Care

Olfaction

Temperment

## Job Market: Radiography

Radiographers generally begin at a salary of \$30,000 and can make up to \$40,000 + annually for full-time work. Additional compensation can be gained through on call, overtime work, and specialization in one of the many specialty radiography areas.

**Note:** Employment in local area may NOT be available upon graduation

Check out local facility websites for a listing of open positions and job descriptions.





## *Curriculum*

- -- RTE Classes must be taken in the order listed in the Student Handbook\*
- --Other **General Education** courses must be completed in order to satisfy the Radiography Associate Degree Program requirements
- --**Algebraic Math and Anatomical Science** skills stressed in Core Curriculum
- \*Curriculum available in current college catalog





# **IMPORTANT ADMISSIONS REQUIREMENT!!!**

**To be eligible for admission to the 2011 NWFSC Radiography Program, you must have:**

- completed the following prerequisite courses by the end of the Fall 2010 semester:
- *College Algebra, Stats, or Math for Liberal Arts or higher level College math course with a grade of “C” or higher*
- *Anatomy & Physiology I & II with a grade of “C” or higher within the last five years (Fall 2006 or later)*
- *Or, in lieu of A&P I and II, the student may take the following course: Human Structure and Function with a grade of “C” or higher within the last five years (Fall 2006 or later)*
- a cumulative college Grade Point Average (GPA) of 2.5 or higher



## Admission/Application Process

A student is eligible for admission to the program if he/she meets all of requirements by the established deadline. All information must be submitted on the current application forms and carry appropriate signatures.

**Acceptance decisions are announced in mid-Spring Semester by calling the numbers listed in RaiderNet. (24 student limit)**

**Waiting list persons will be contacted by mail, then by phone if their number is**



## Post-Admission Information

*After admission to the program, but prior to enrollment in the first Radiography course, students must satisfy the following additional requirements:*

- Posses a valid BLS CPR certificate for Healthcare providers (adult, child and infant)
- Submit documentation verifying recent (within 1 year) medical examination indicating health and immunization status *Hepatitis B Vaccine series required*

(Note: Other Immunizations may be required.)



## Applying to more than one program?

On the general college application for admission or “re-admission”, you may apply to other programs that you are interested in.



# Questions??

Log onto our website

[www.NWFSC.edu/radiography](http://www.NWFSC.edu/radiography)

or

## Contact:

Roslyn Johnson, Program Director

Johnson3@nwfsc.edu

850-729-6457

Grace Stewart, Clinical Coordinator

Stewartg@nwfsc.edu

850-729-6462

- Educational Advisor, Sandy Bishop 729-6922

# 5 points

- Email Holly Solaas - for information session credit  
[solaash@nwfsc.edu](mailto:solaash@nwfsc.edu)
- Thank you!

