

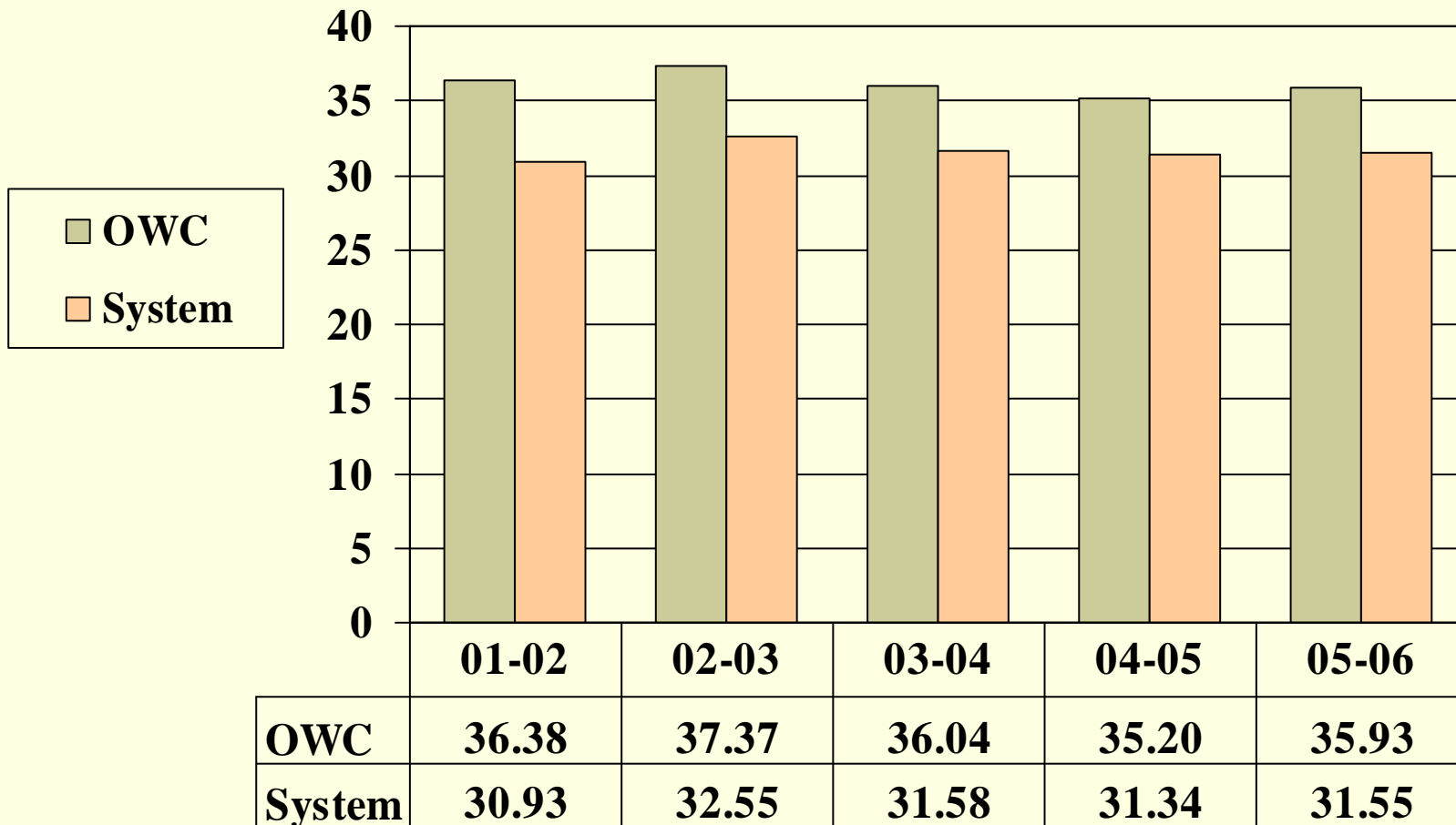
---

# Accountability Measures Report For 2005-2006

March 2007

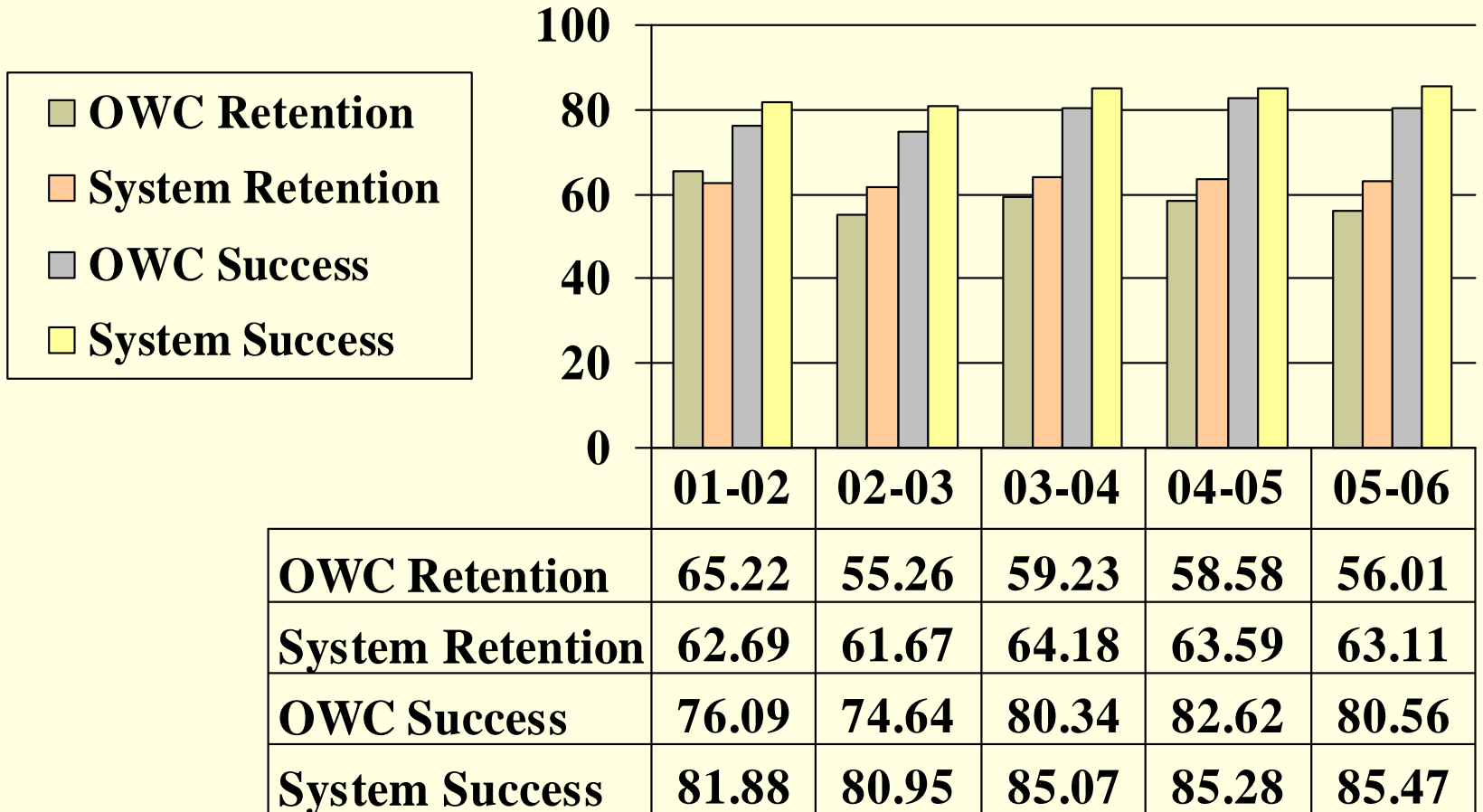
# Measure 1 Part 1

## Prior Year High School Graduates Enrolled the Following Year



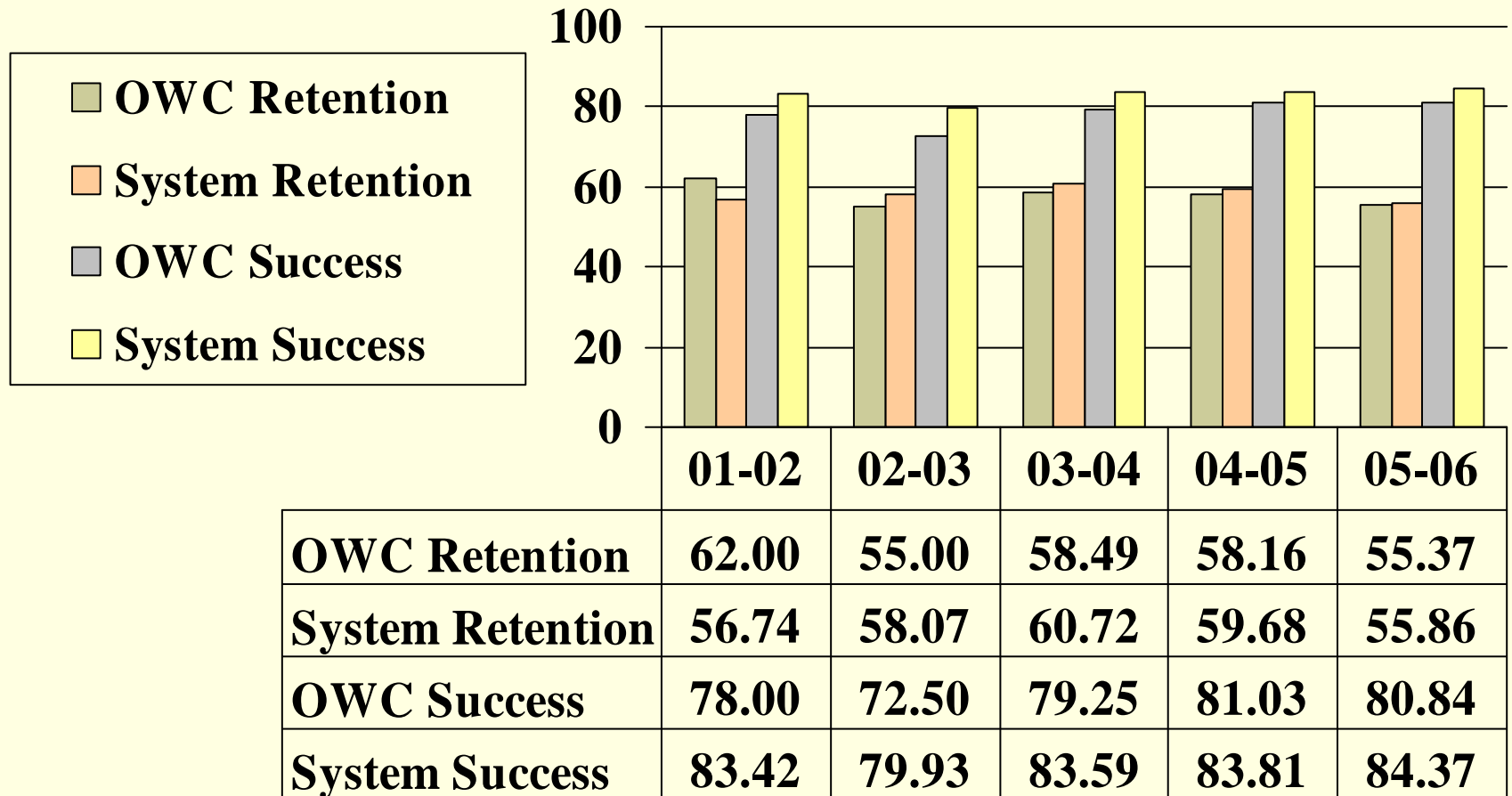
# Measure 1 Part 2

## Retention and Success Rates for Associate of Arts Students



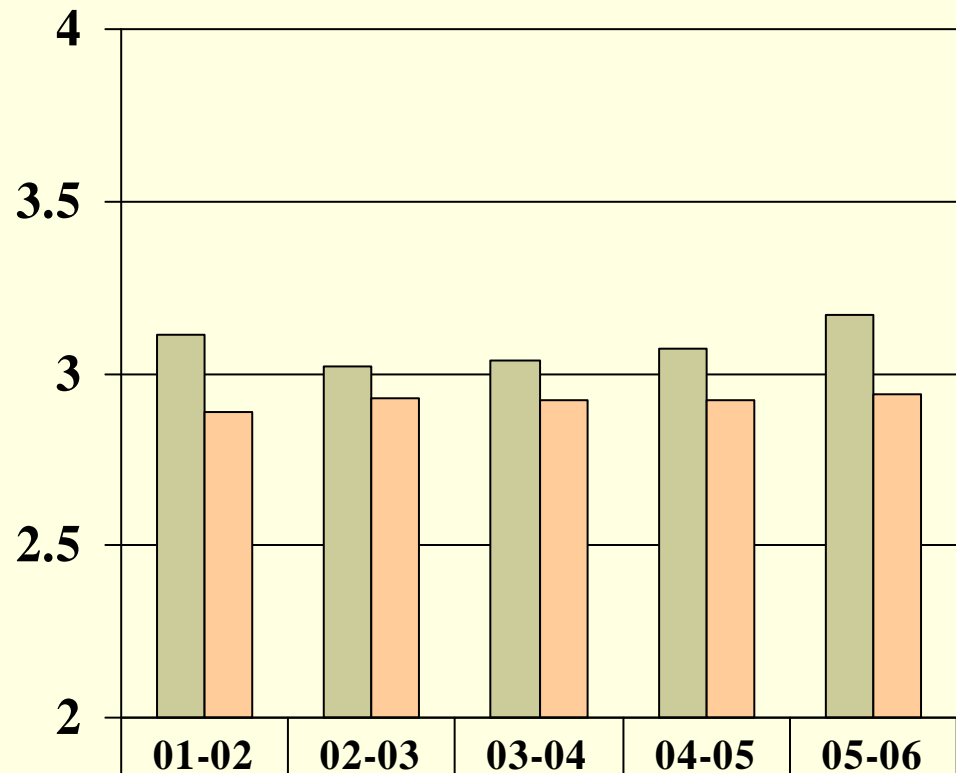
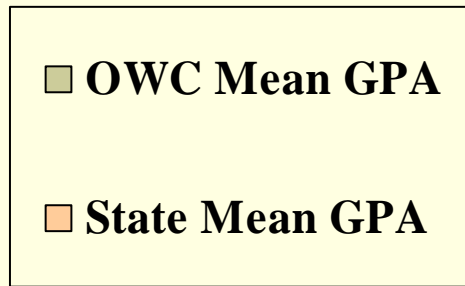
# Measure 1 Part 2

## Retention and Success Rates for Associate of Science and Associate of Applied Science Students



# Measure 2

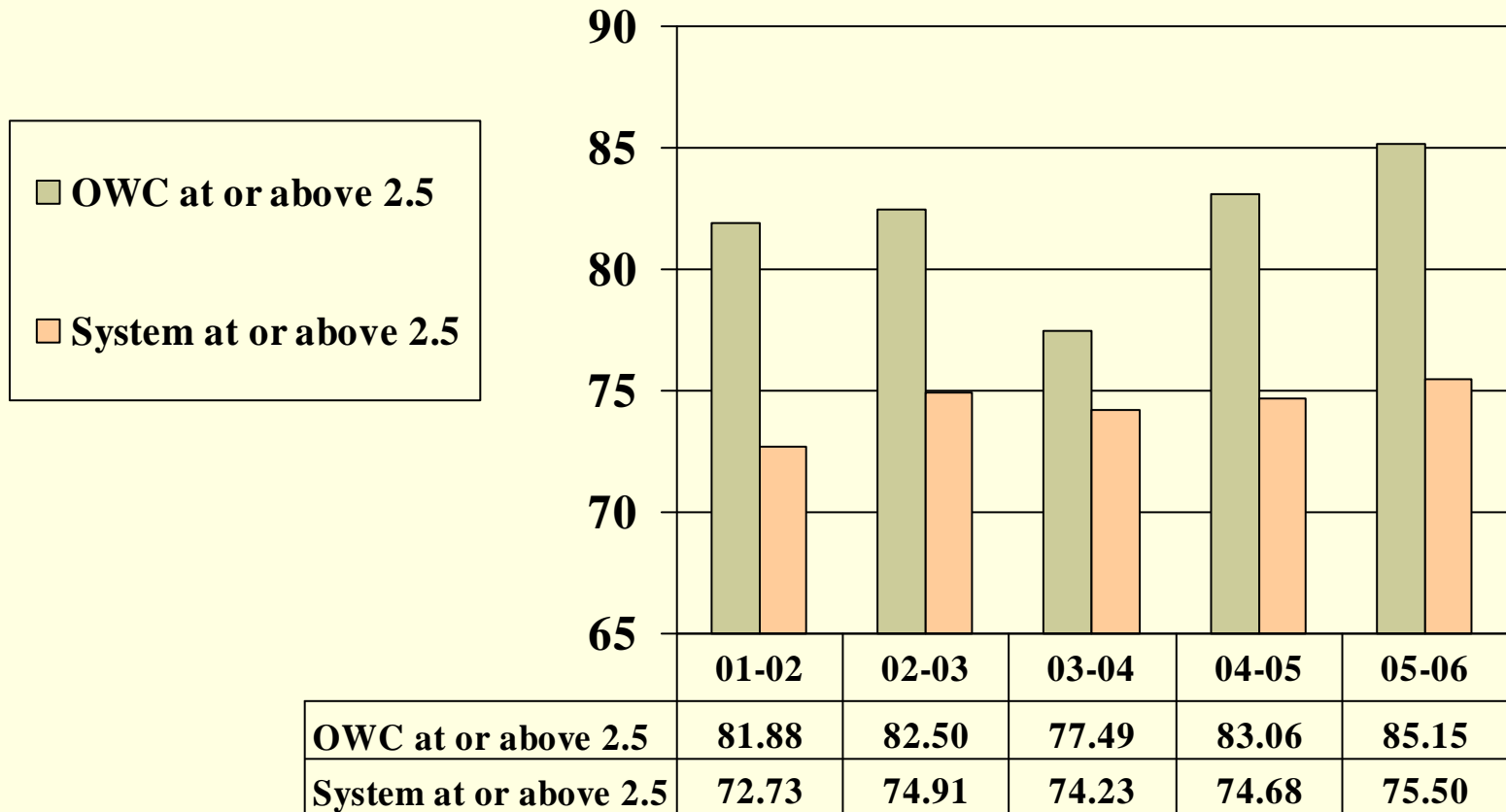
## Associate of Arts Degree Transfer Performance



	01-02	02-03	03-04	04-05	05-06
<b>OWC Mean GPA</b>	<b>3.11</b>	<b>3.02</b>	<b>3.04</b>	<b>3.07</b>	<b>3.17</b>
<b>State Mean GPA</b>	<b>2.89</b>	<b>2.93</b>	<b>2.92</b>	<b>2.92</b>	<b>2.94</b>

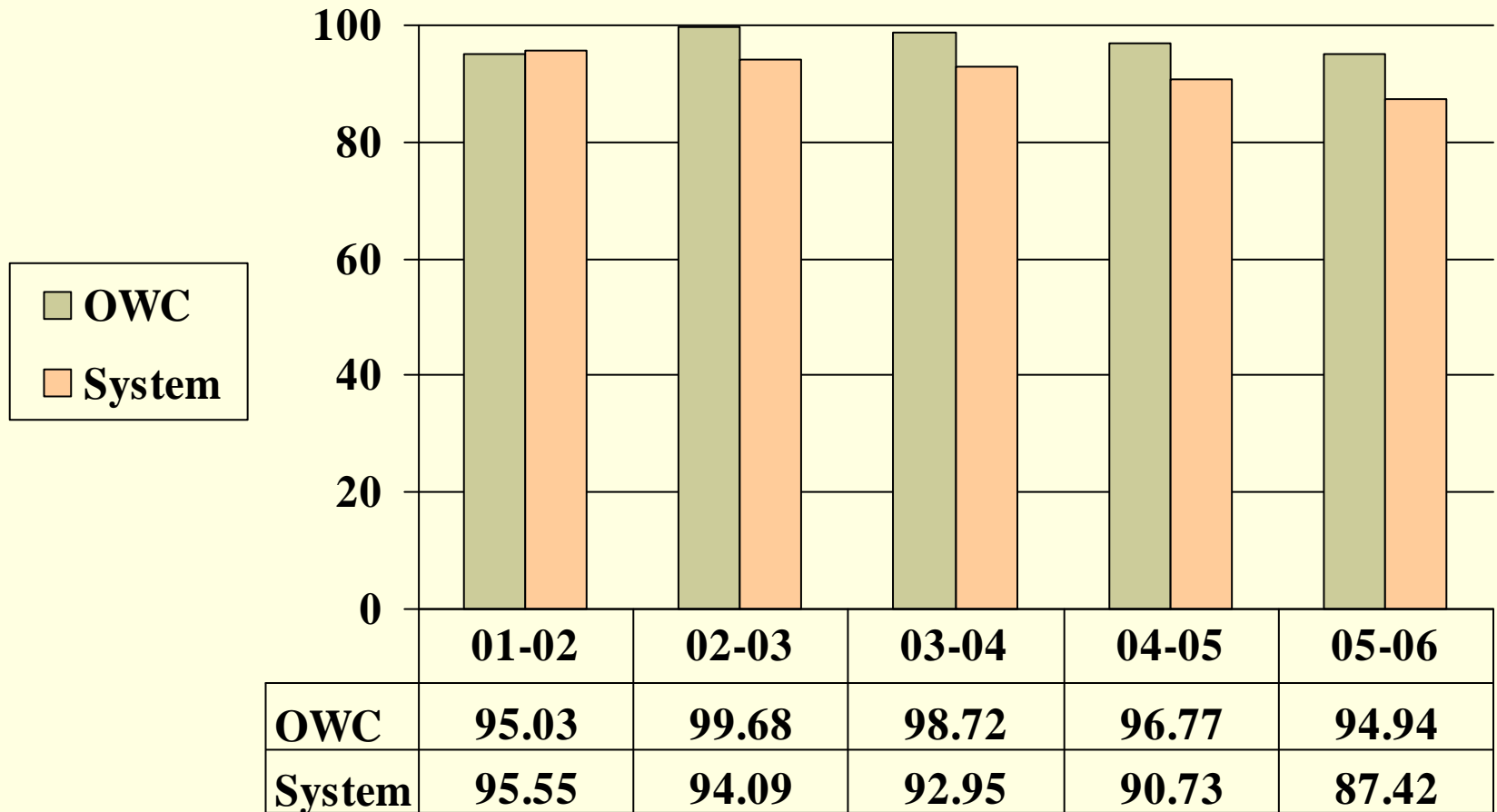
## Measure 2

### Associate of Arts Degree Transfer Performance



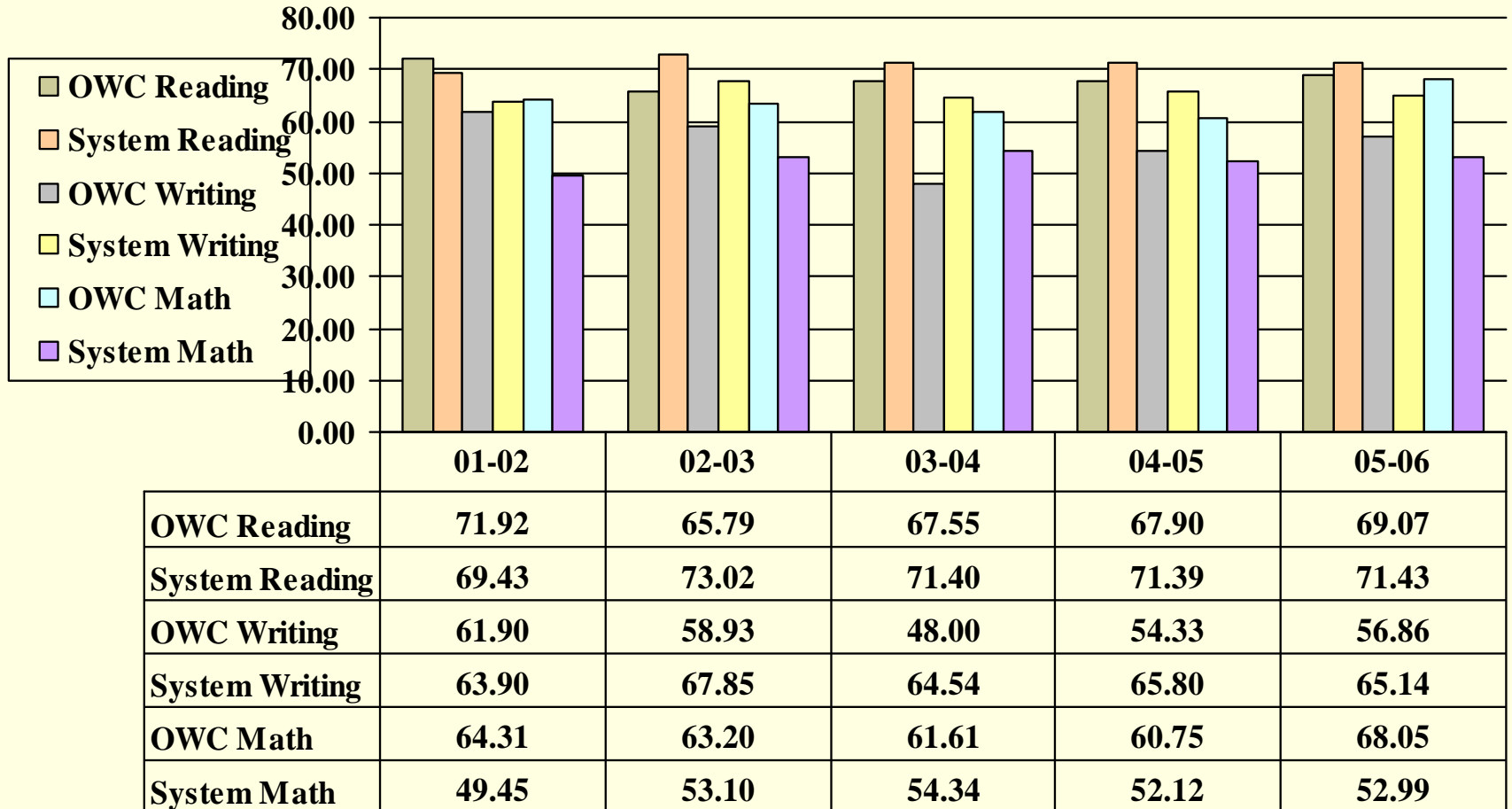
# Measure 3 Part 2

## Placement of Associate of Science and Certificates Program Completers



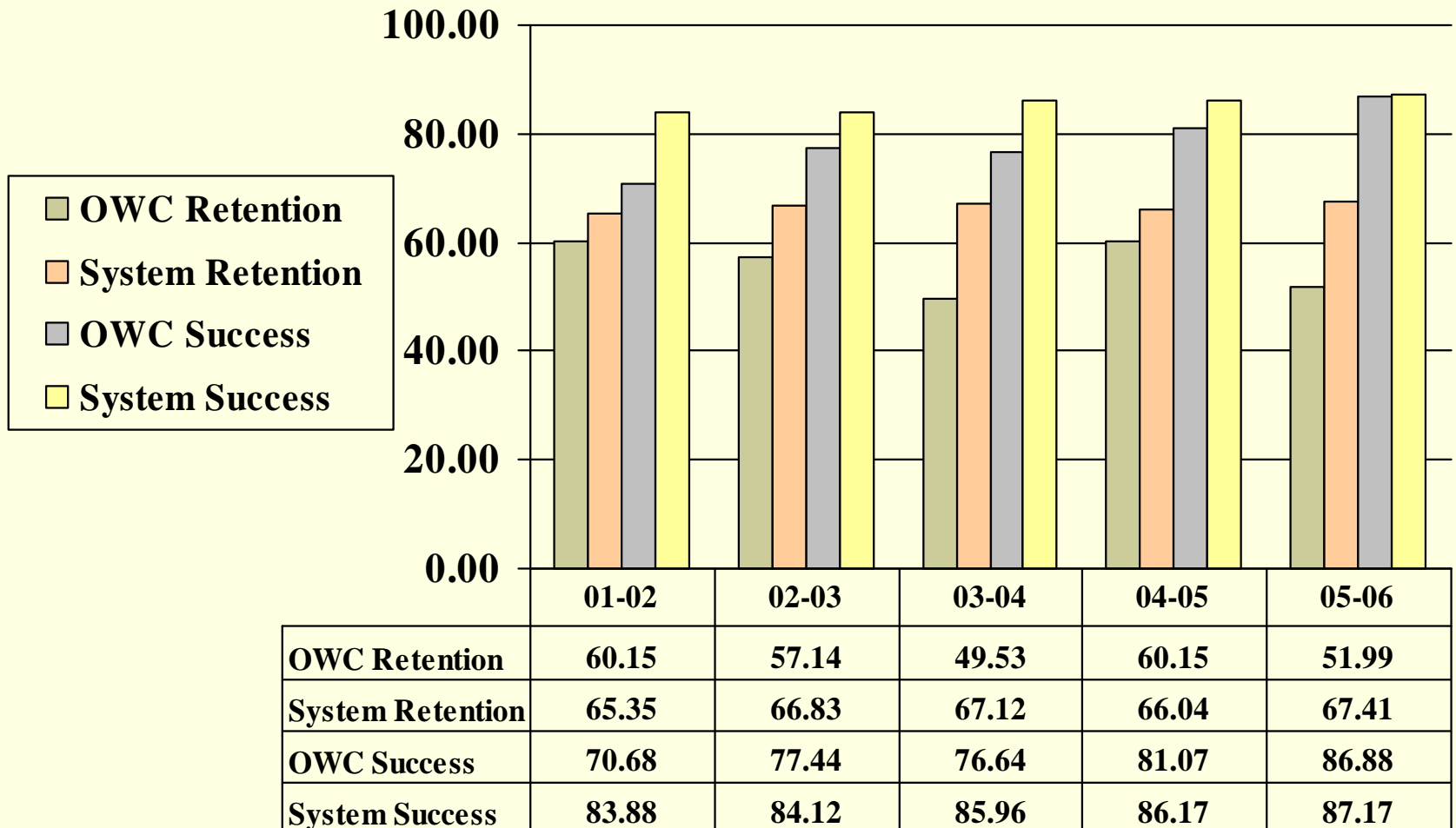
# Measure 4 Part 1

## College Preparatory Success Rate

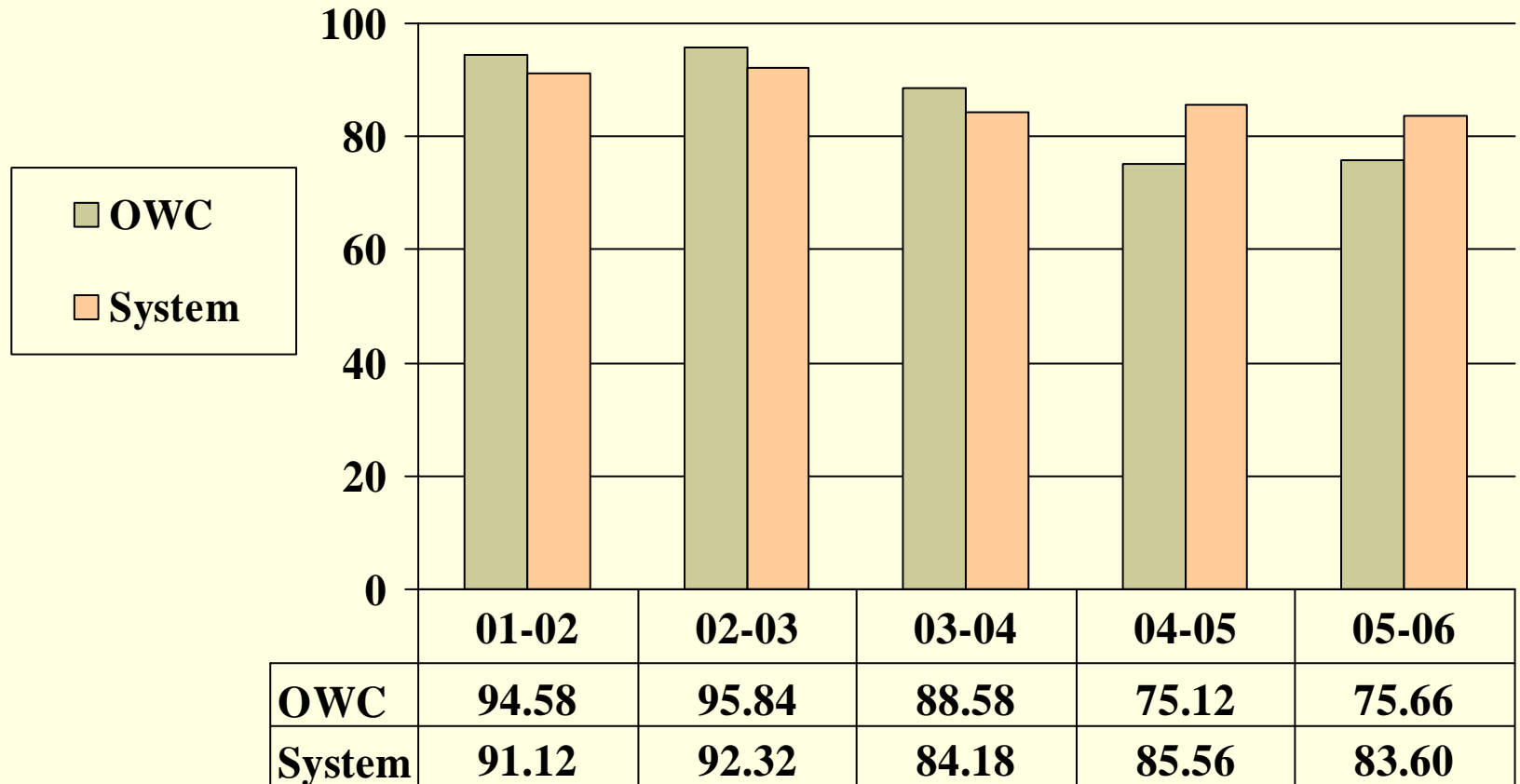


# Measure 4 Part 2

## College Preparatory Retention and Success Rates for Associate Degree Students



# Measure 5 CLAST Performance



Percent passing all Four Subtests