

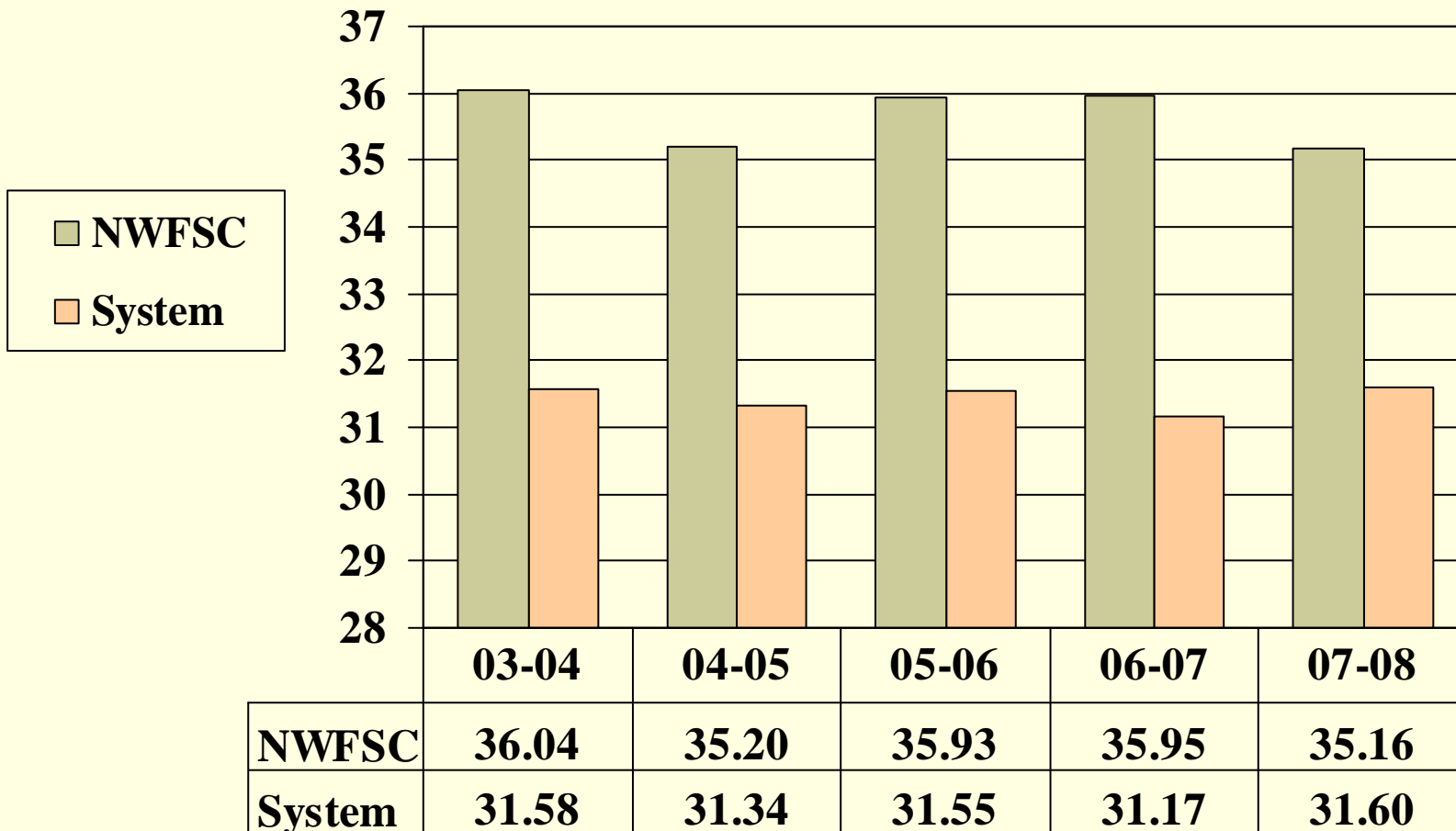
---

# Accountability Measures Report For 2007-2008

July 2009

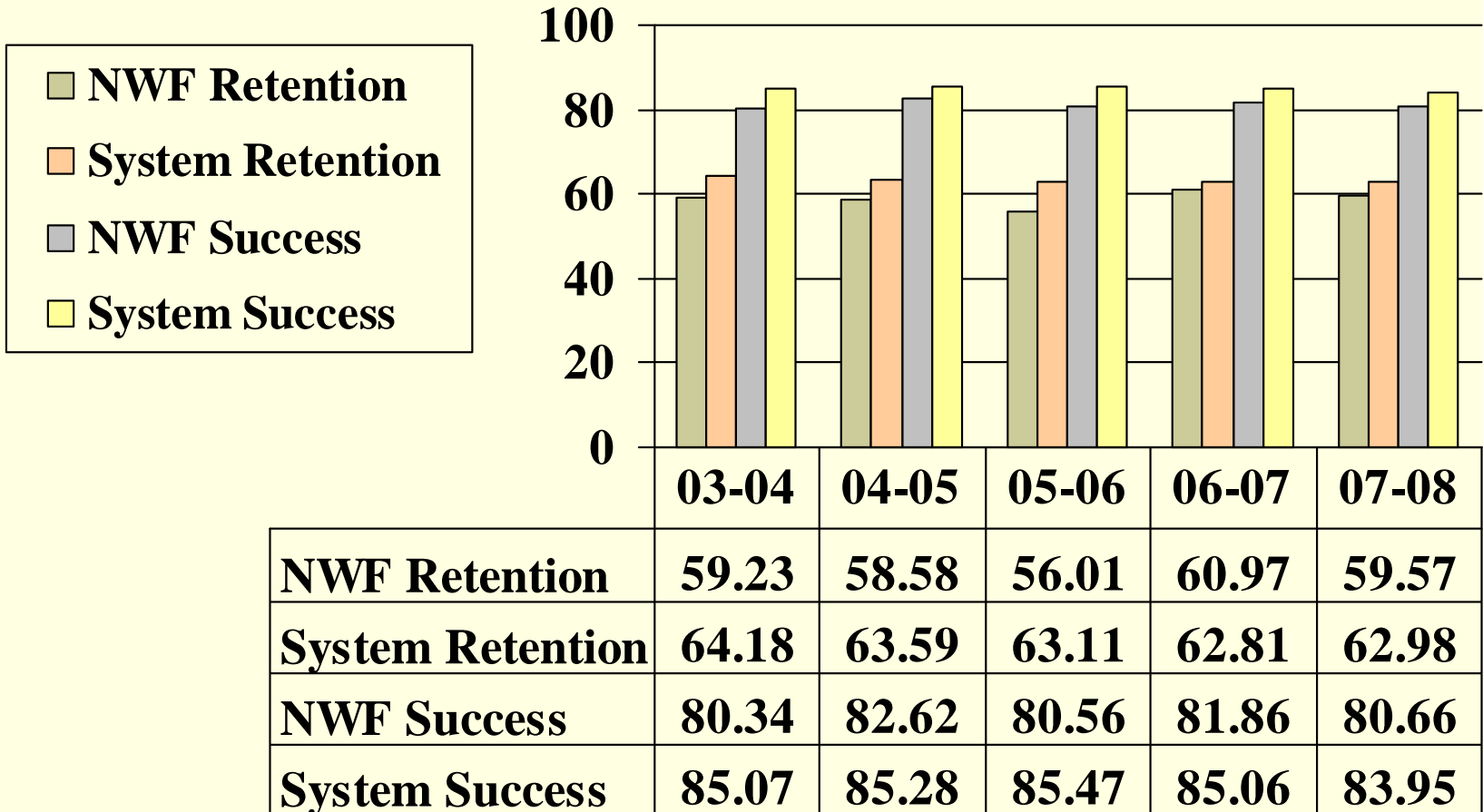
# Measure 1 Part 1

## Prior Year High School Graduates Enrolled the Following Year



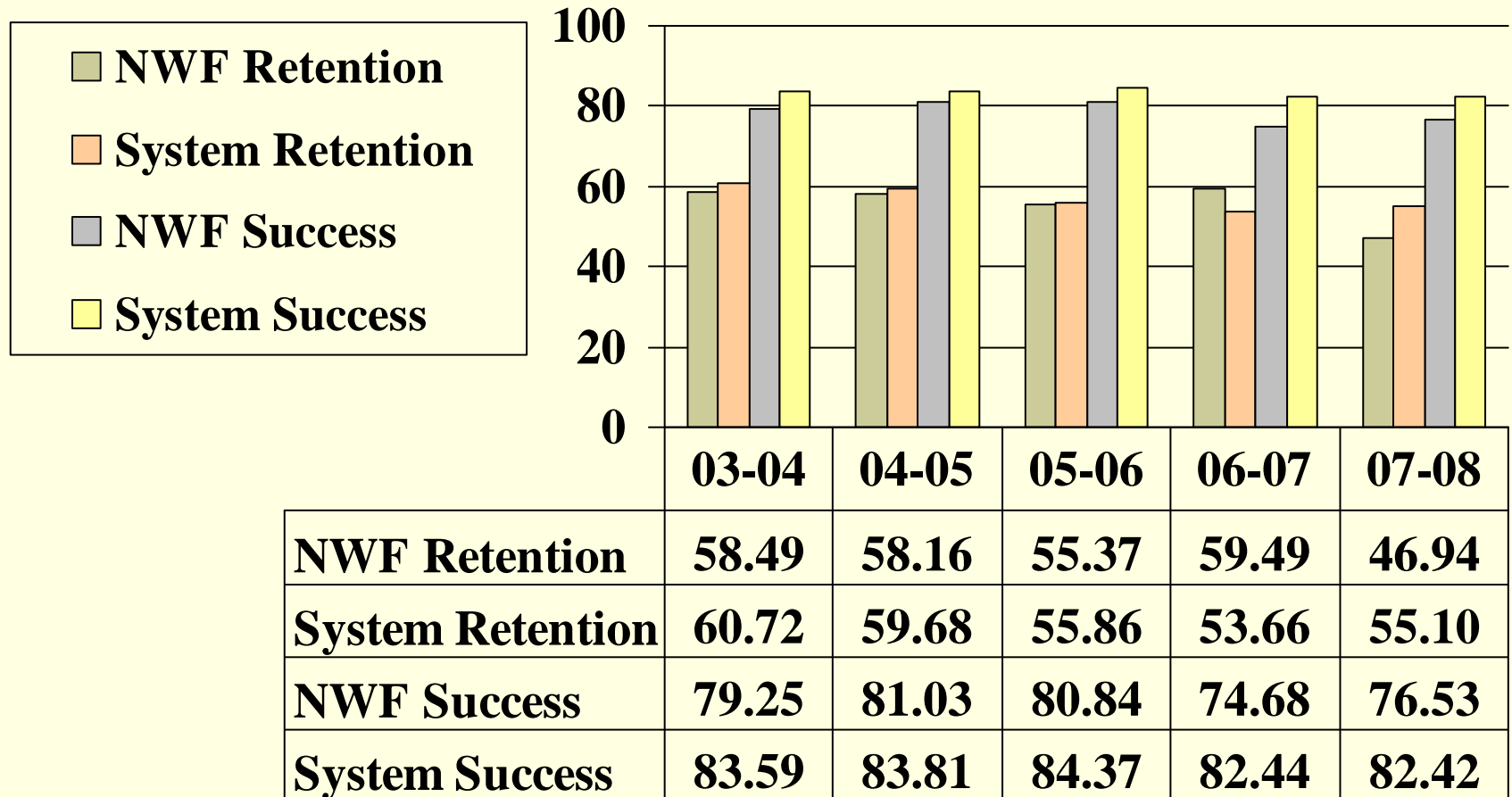
# Measure 1 Part 2

## Retention and Success Rates for Associate of Arts Students



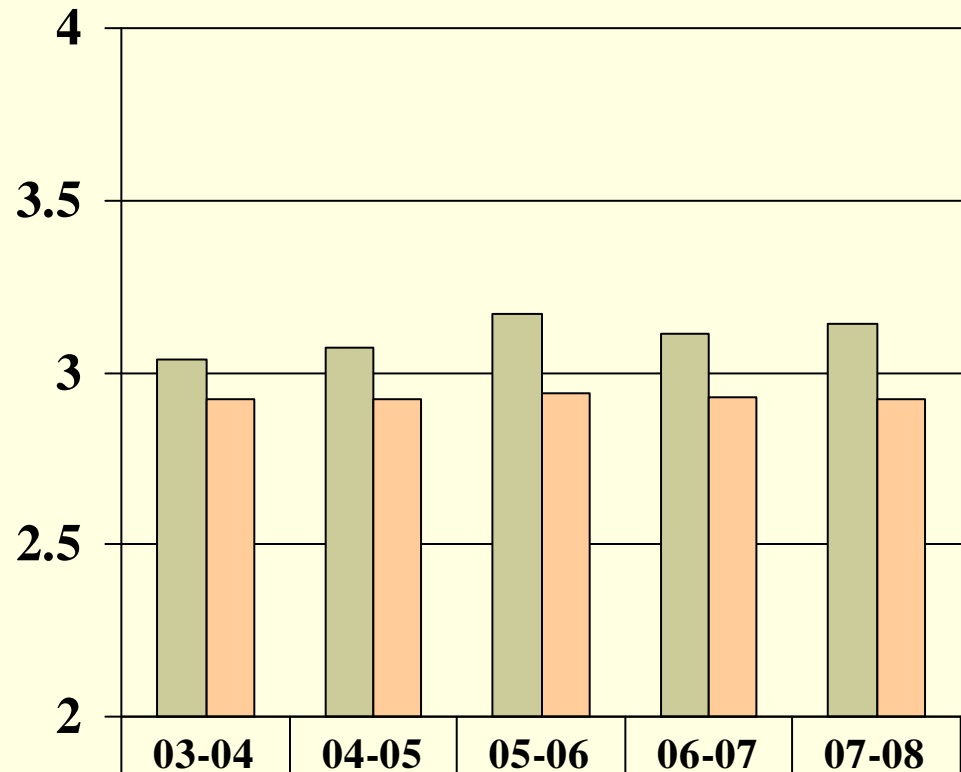
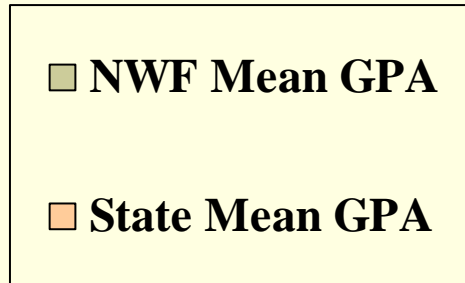
## Measure 1 Part 2

### Retention and Success Rates for Associate of Science and Associate of Applied Science Students



# Measure 2

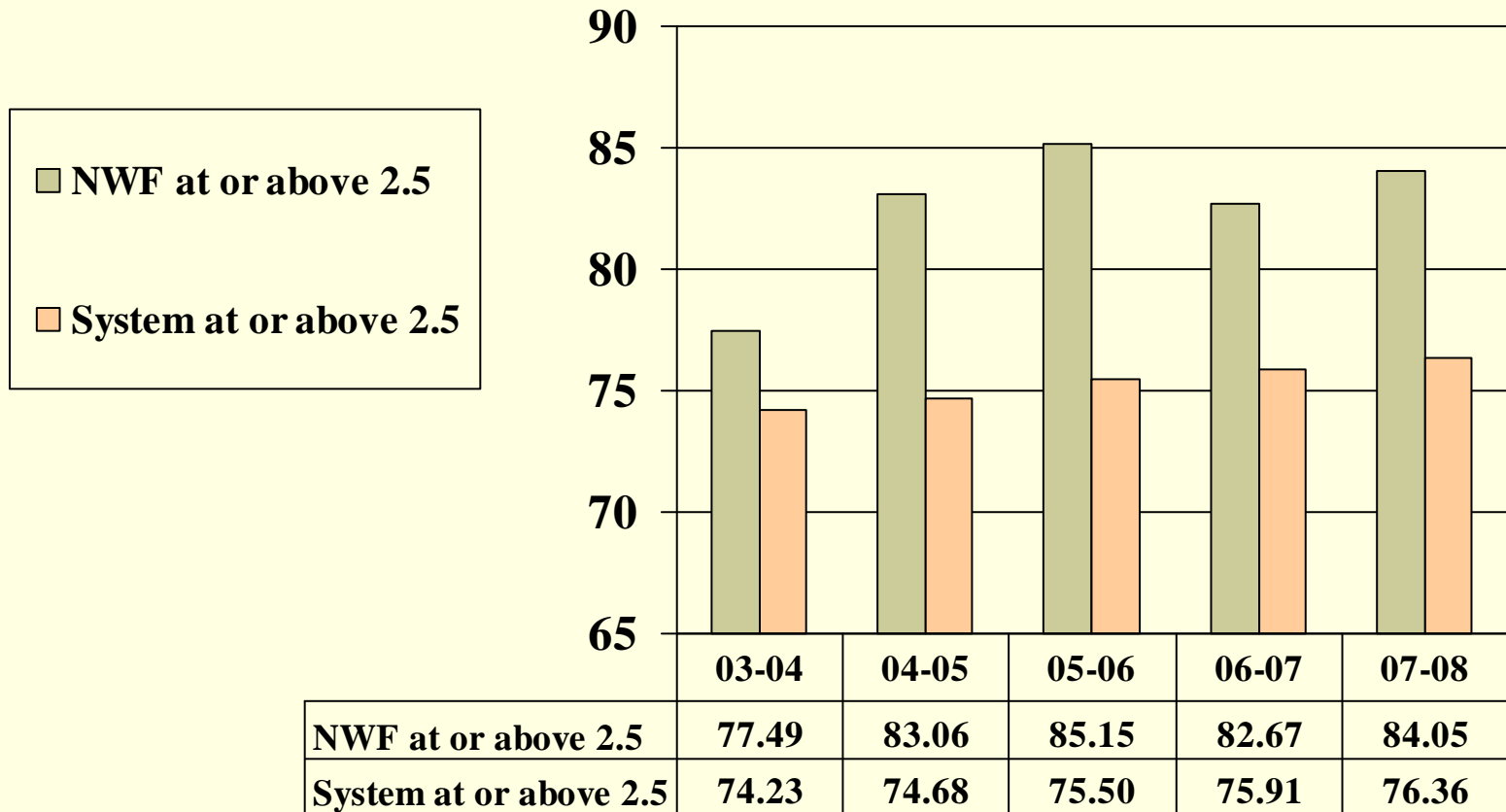
## Associate of Arts Degree Transfer Performance



	03-04	04-05	05-06	06-07	07-08
<b>NWF Mean GPA</b>	3.04	3.07	3.17	3.11	3.14
<b>State Mean GPA</b>	2.92	2.92	2.94	2.93	2.92

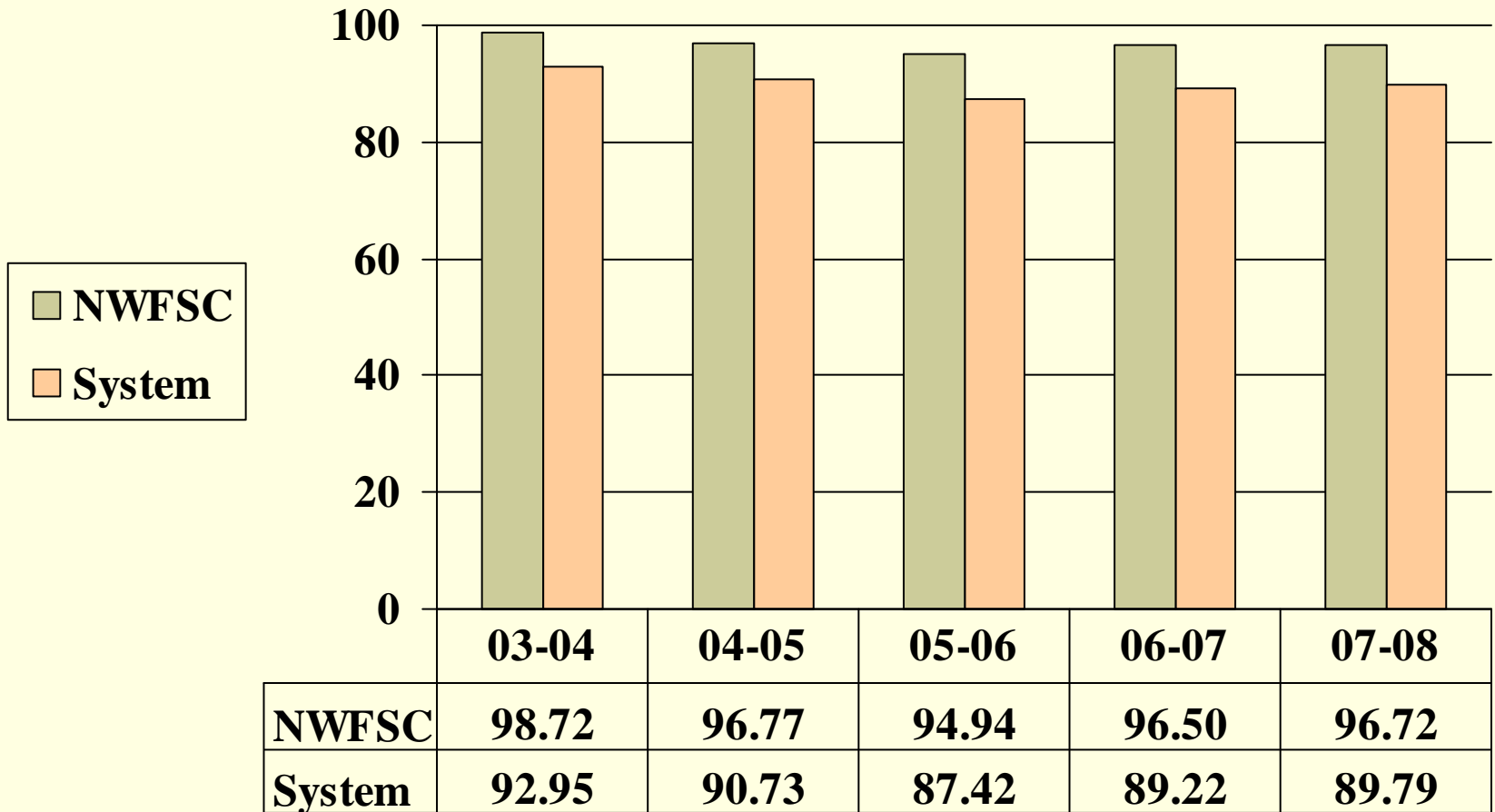
## Measure 2

### Associate of Arts Degree Transfer Performance



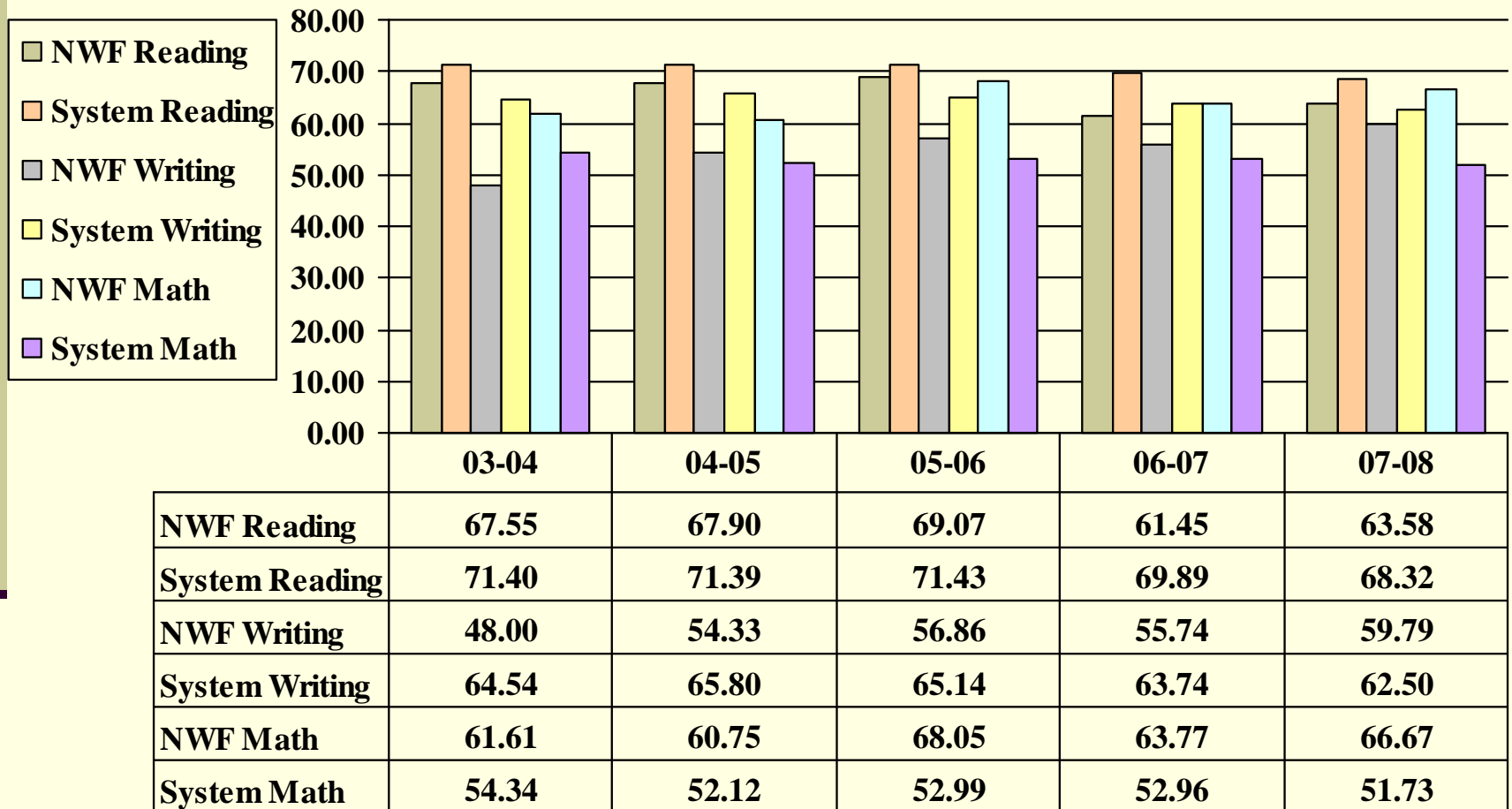
# Measure 3 Part 2

## Placement of Associate of Science and Certificates Program Completers



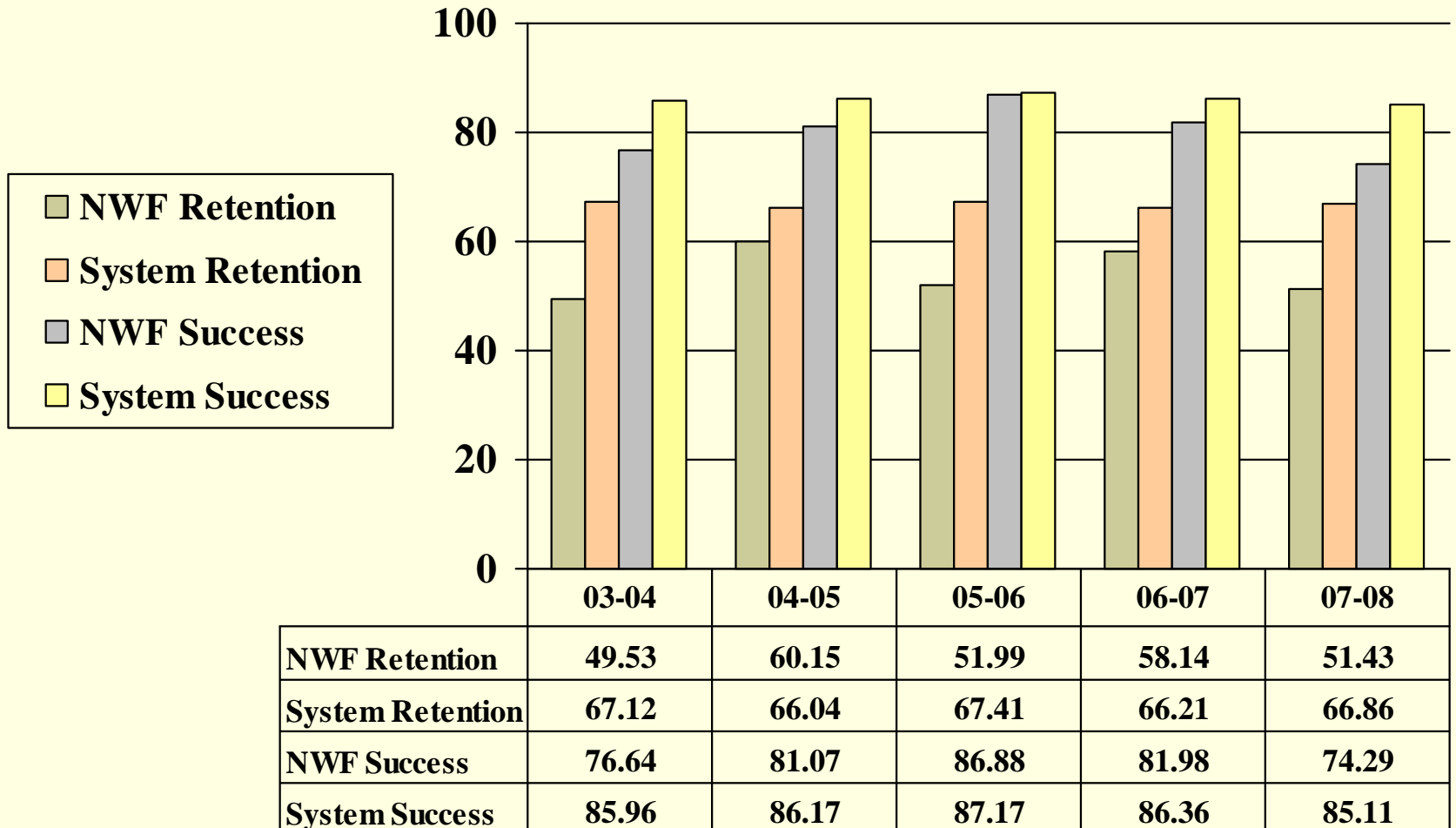
# Measure 4 Part 1

## College Preparatory Success Rate

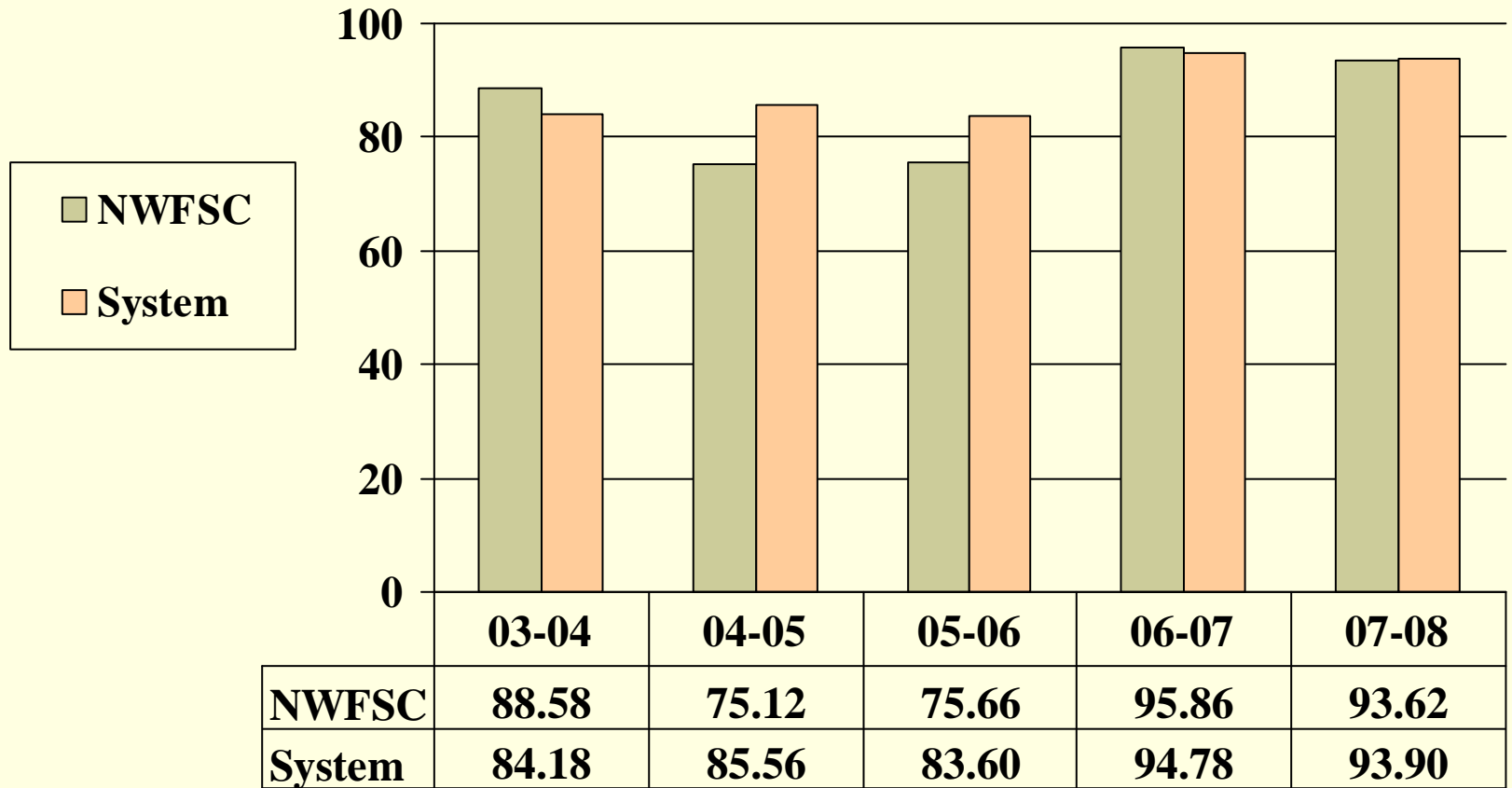


# Measure 4 Part 2

## College Preparatory Retention and Success Rates for Associate Degree Students



# Measure 5 CLAST Performance



Percent passing all Four Subtests