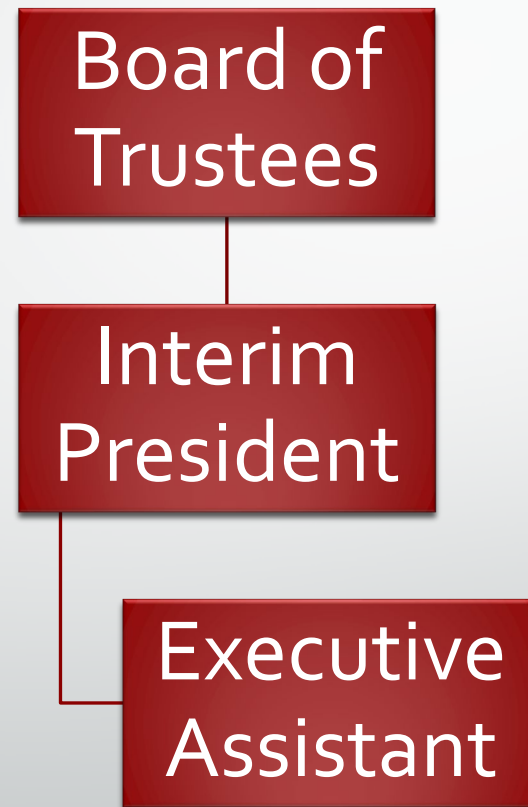


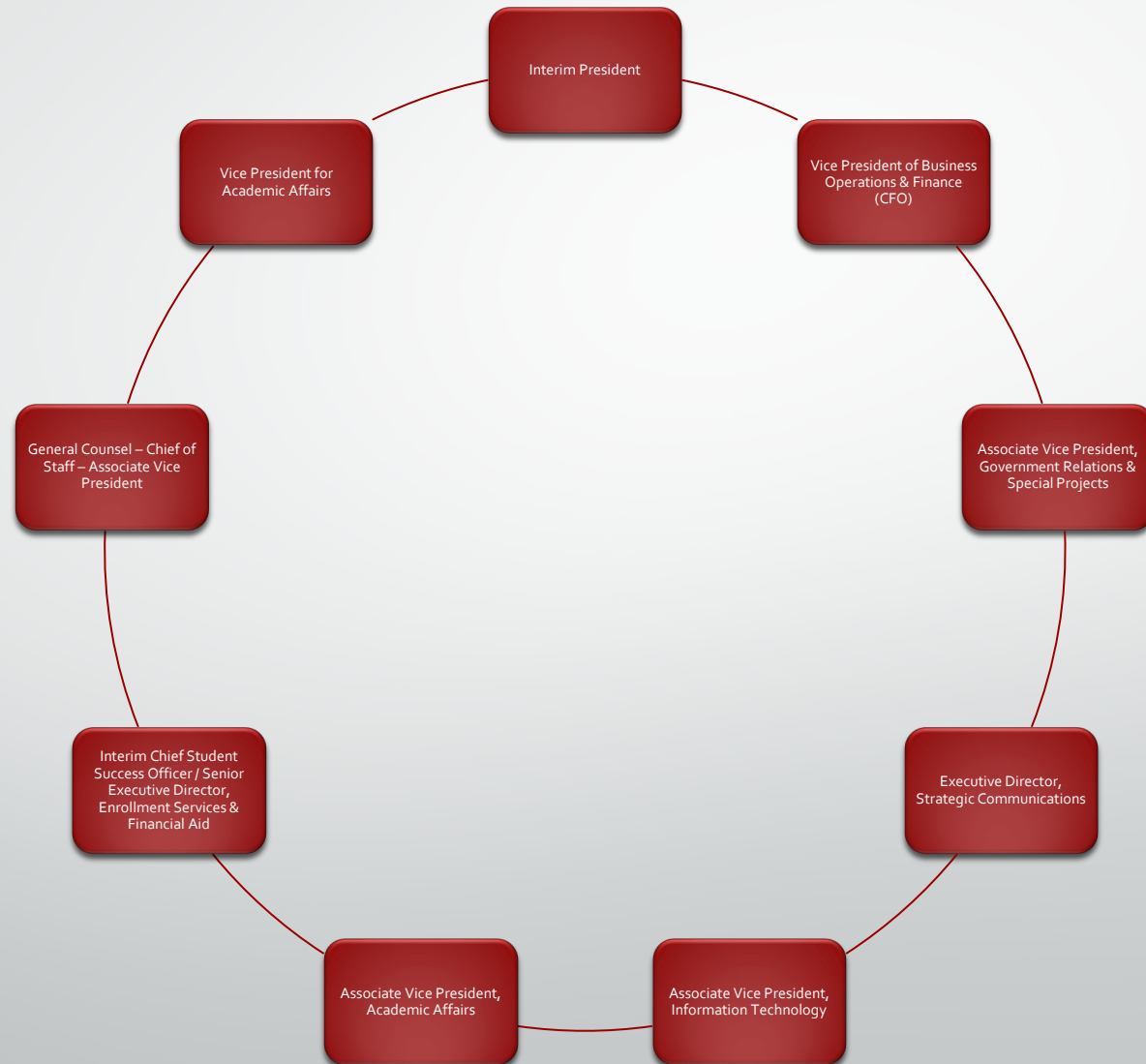


Northwest Florida State College Organizational Charts

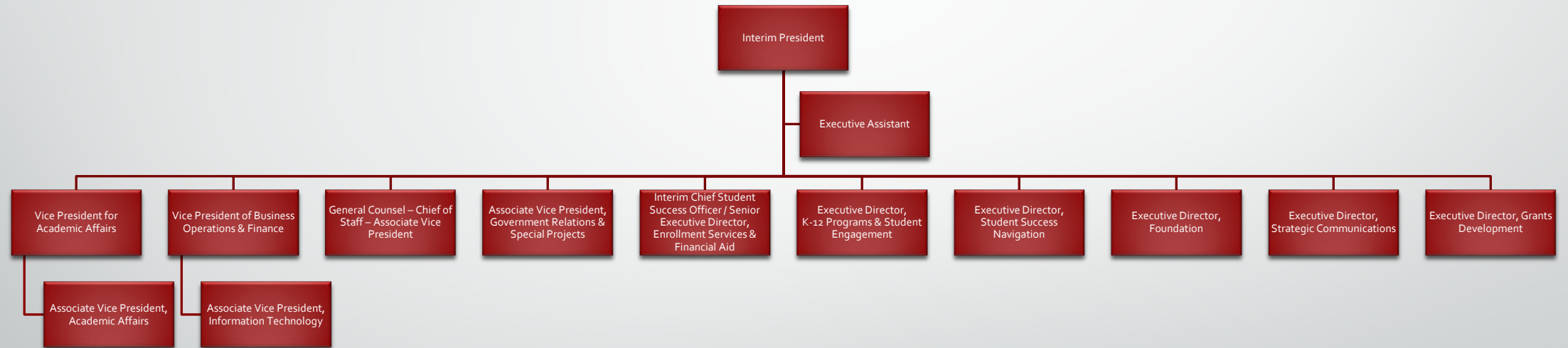
Board of Trustees & Interim President's Office



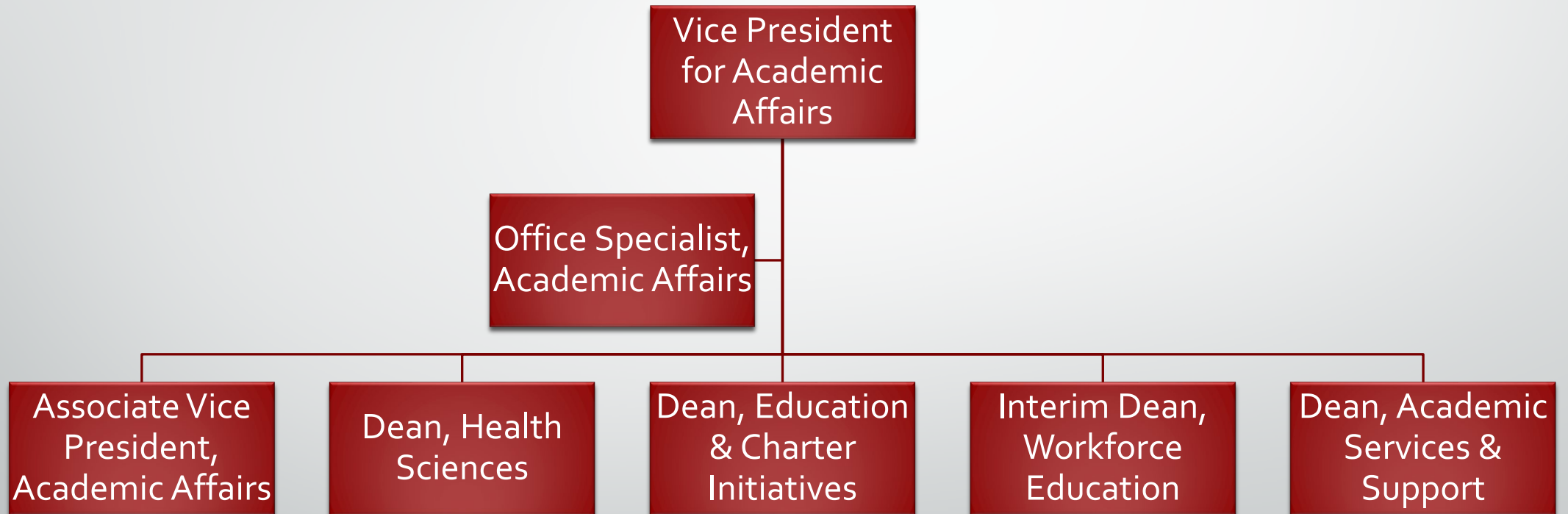
Cabinet Leadership



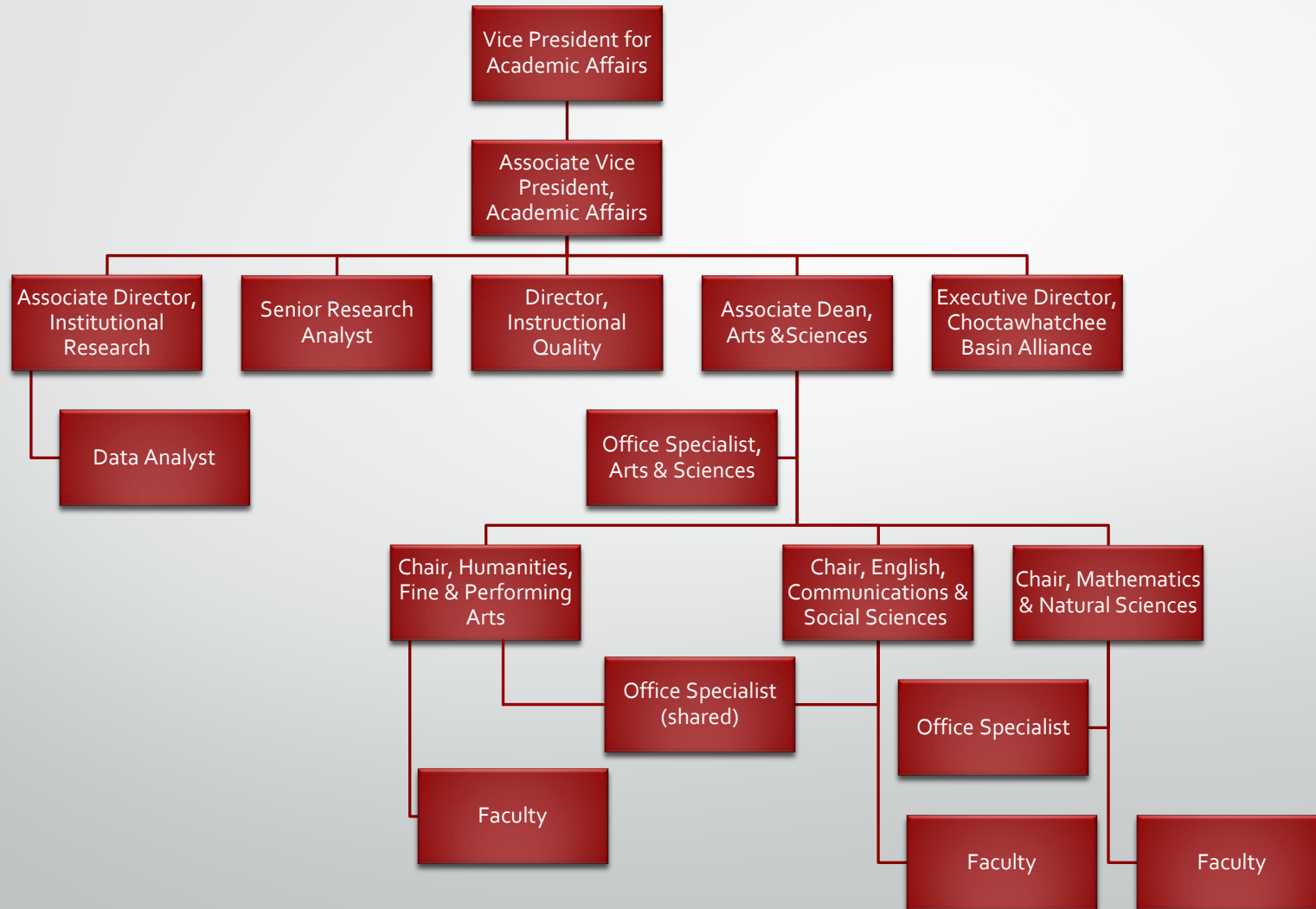
Interim President's Direct Reports



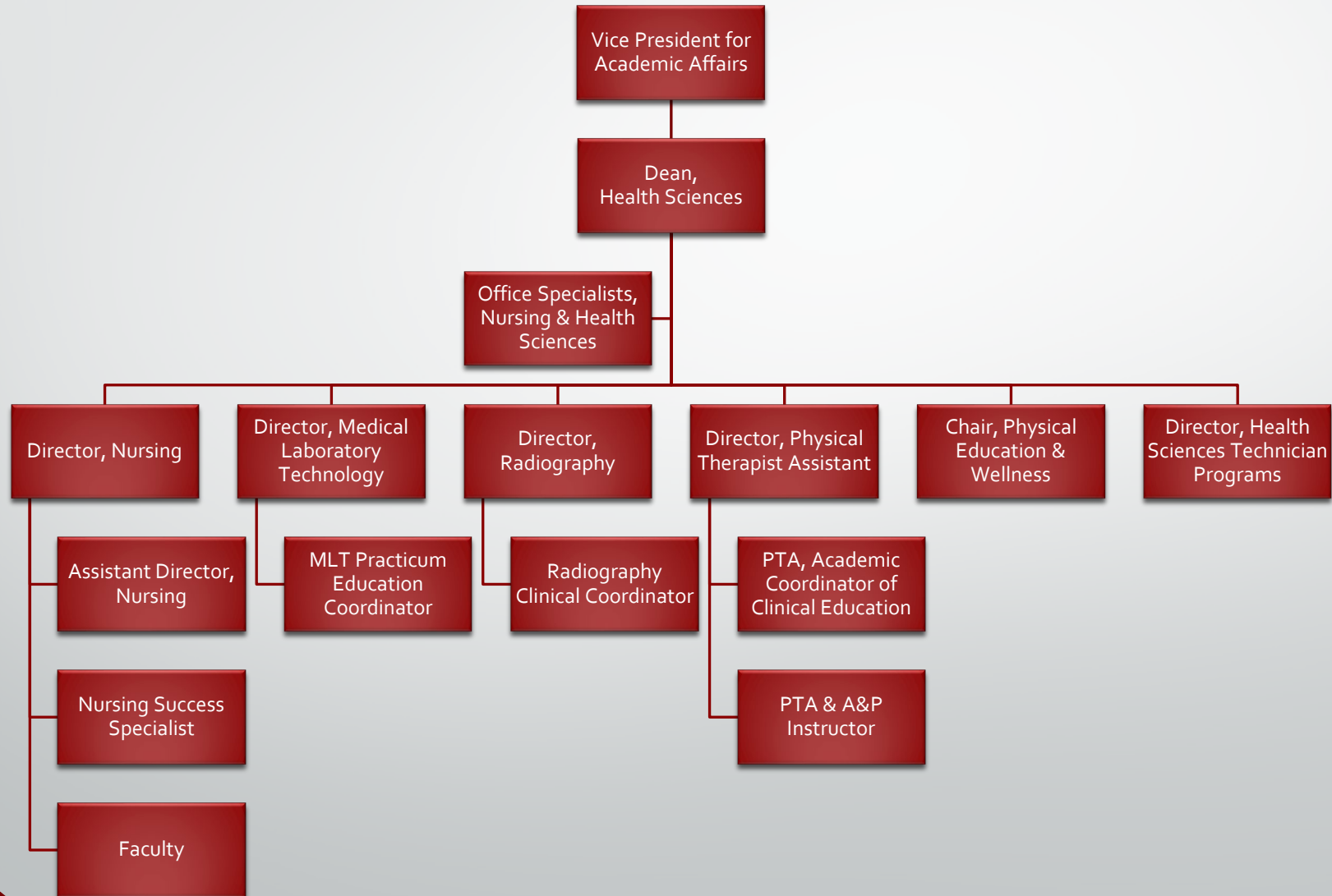
Academic Affairs



Academic Affairs

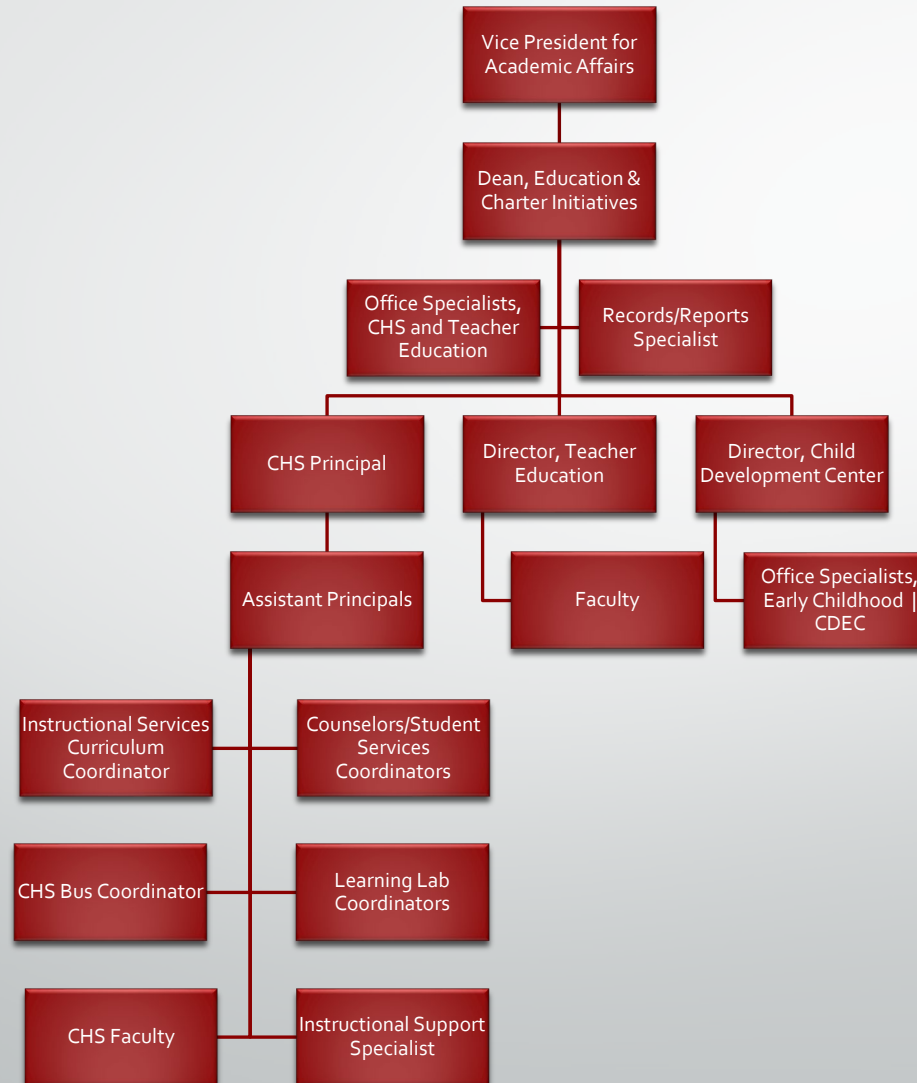


Academic Affairs Health Sciences



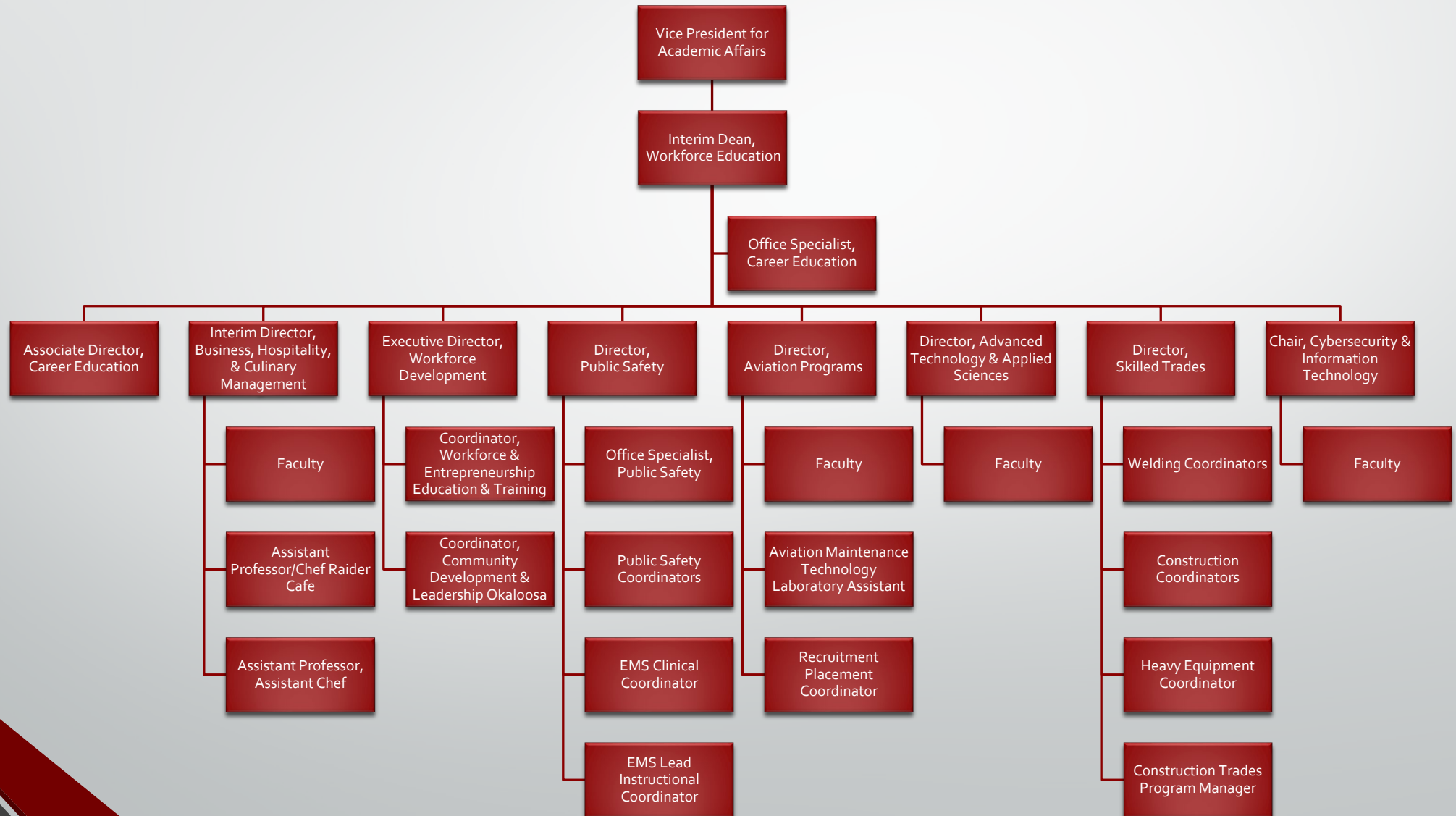
Academic Affairs

Education and Charter Initiatives

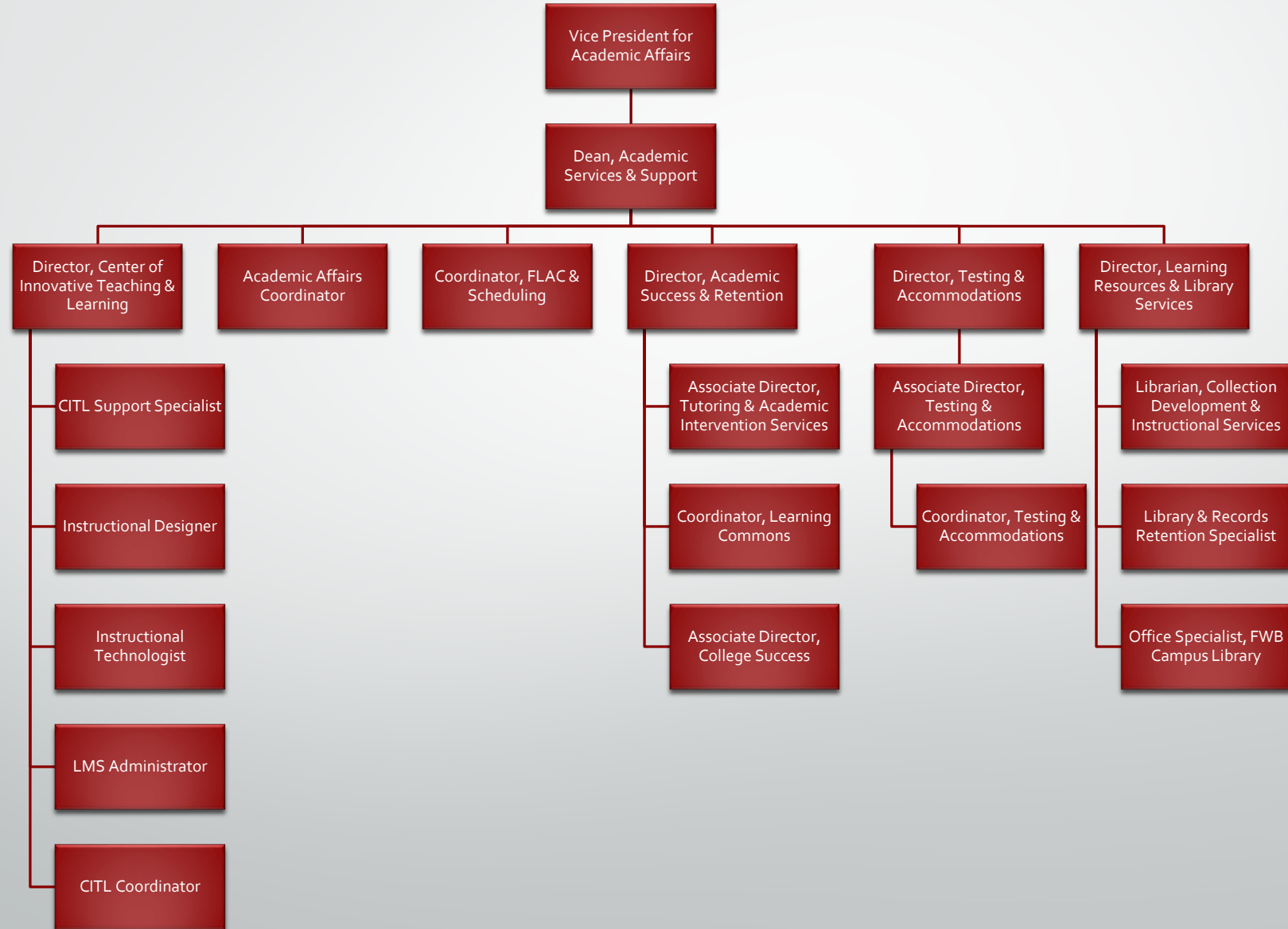


Academic Affairs

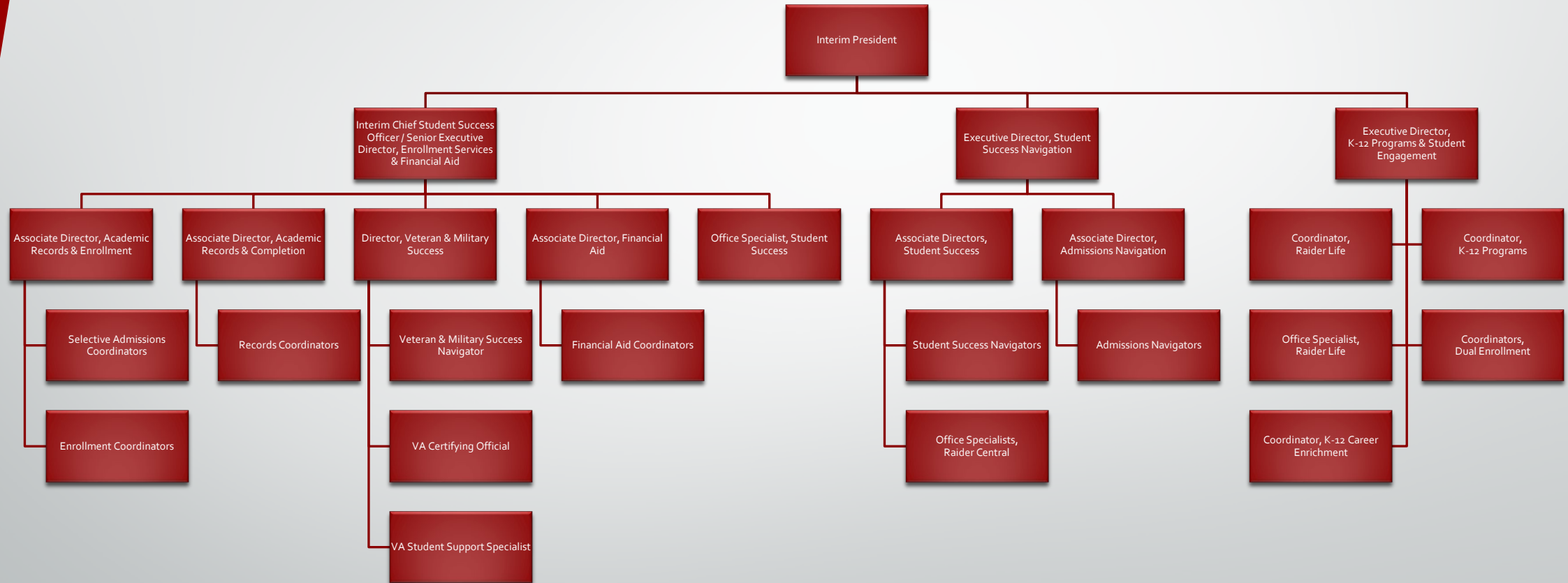
Workforce Education



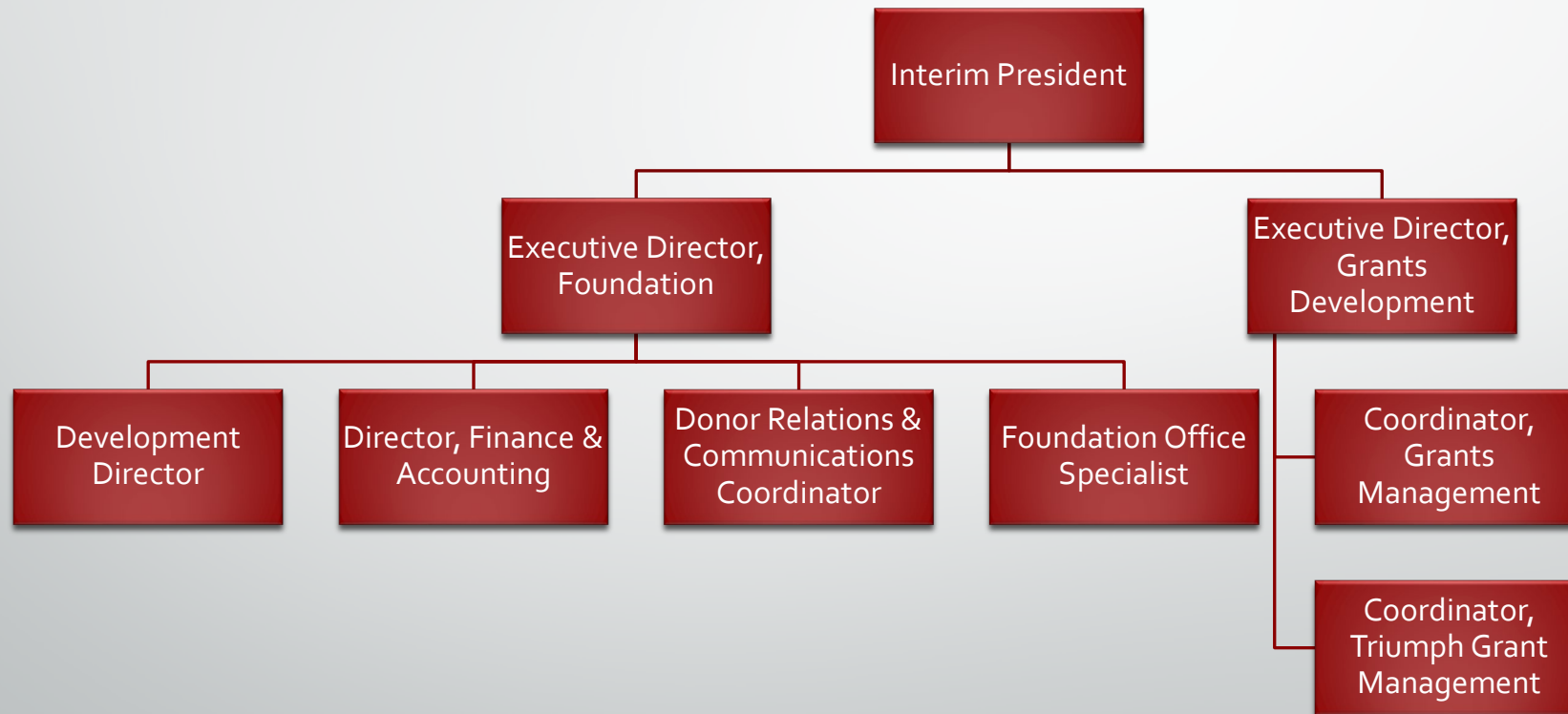
Academic Services & Support



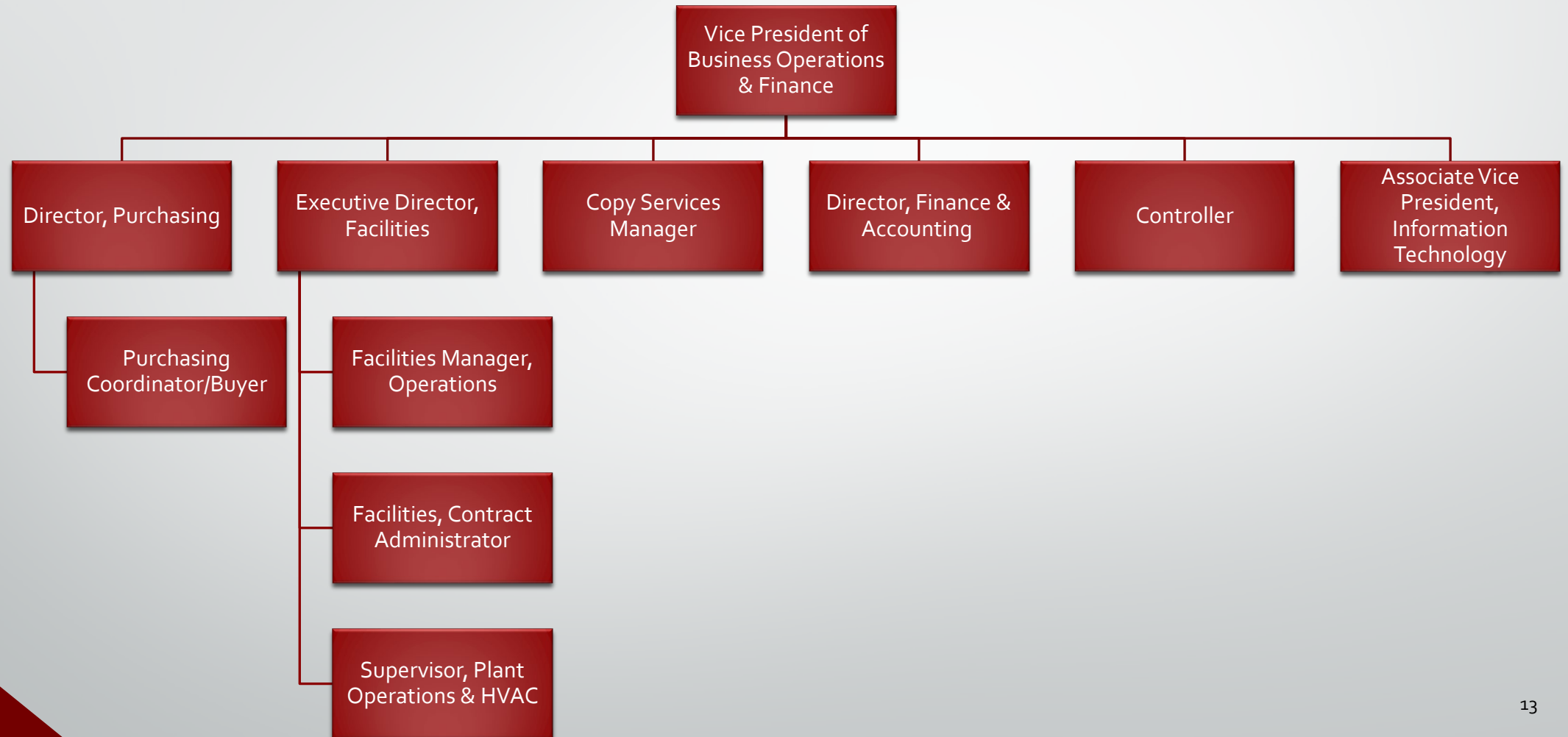
Student Success



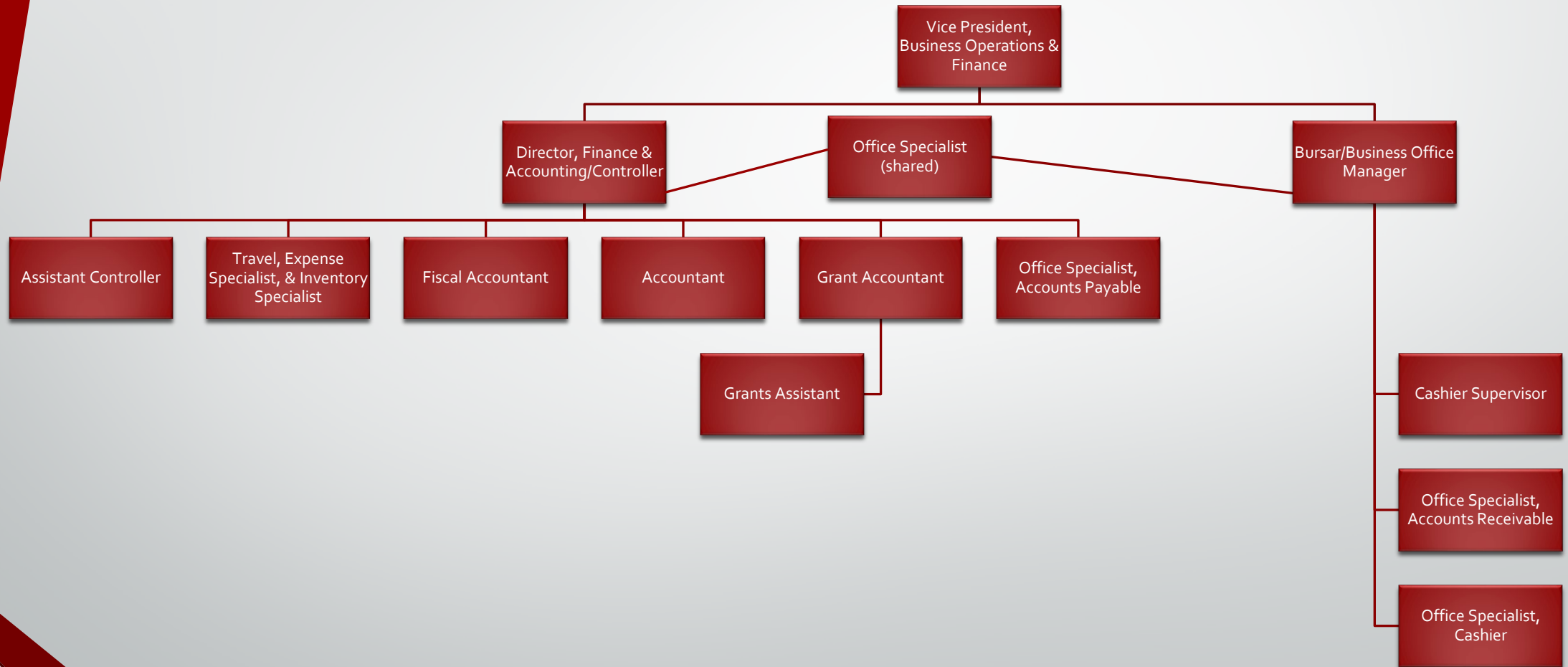
Northwest Florida State College Foundation and Grants



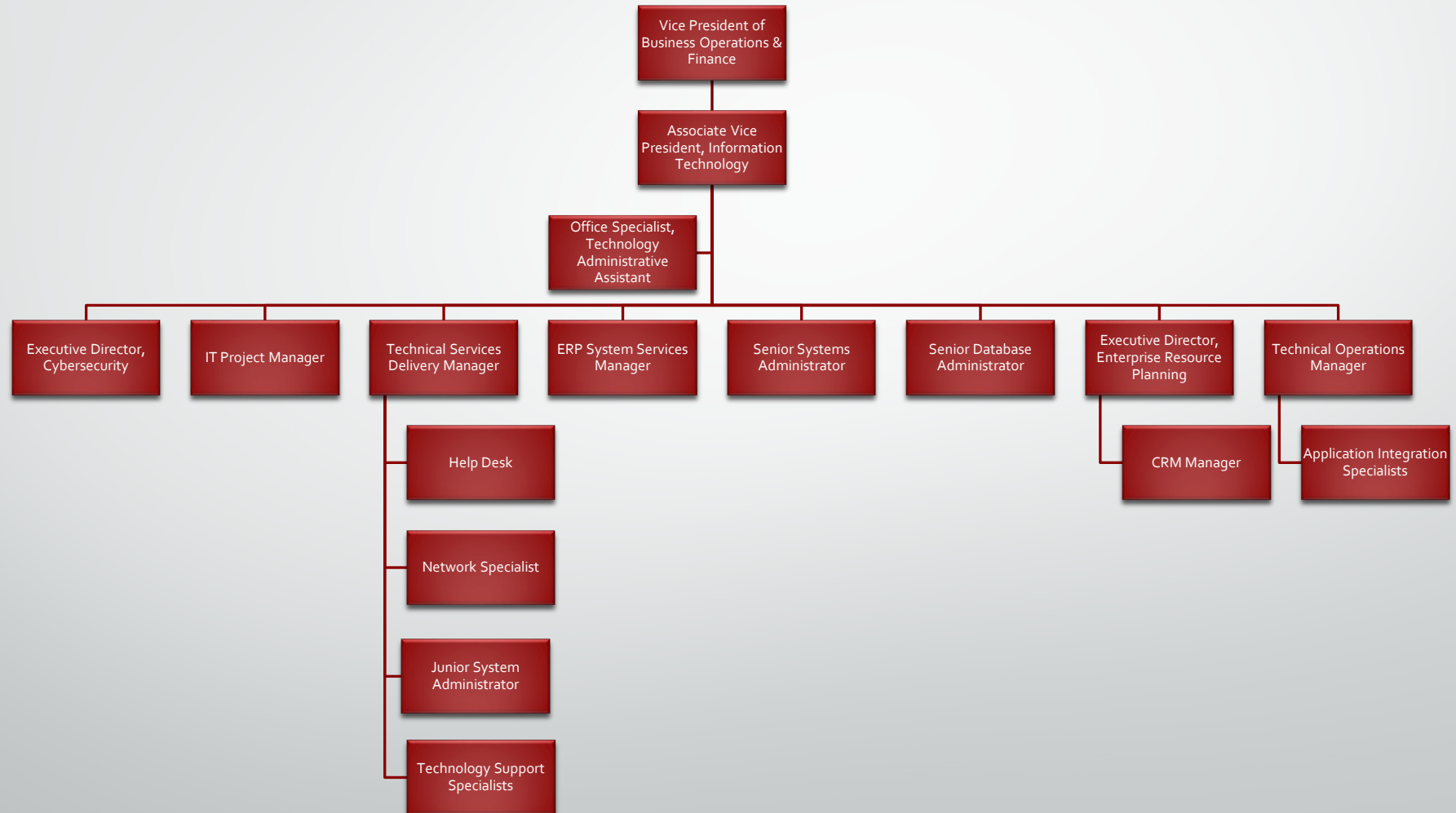
Business Operations & Finance



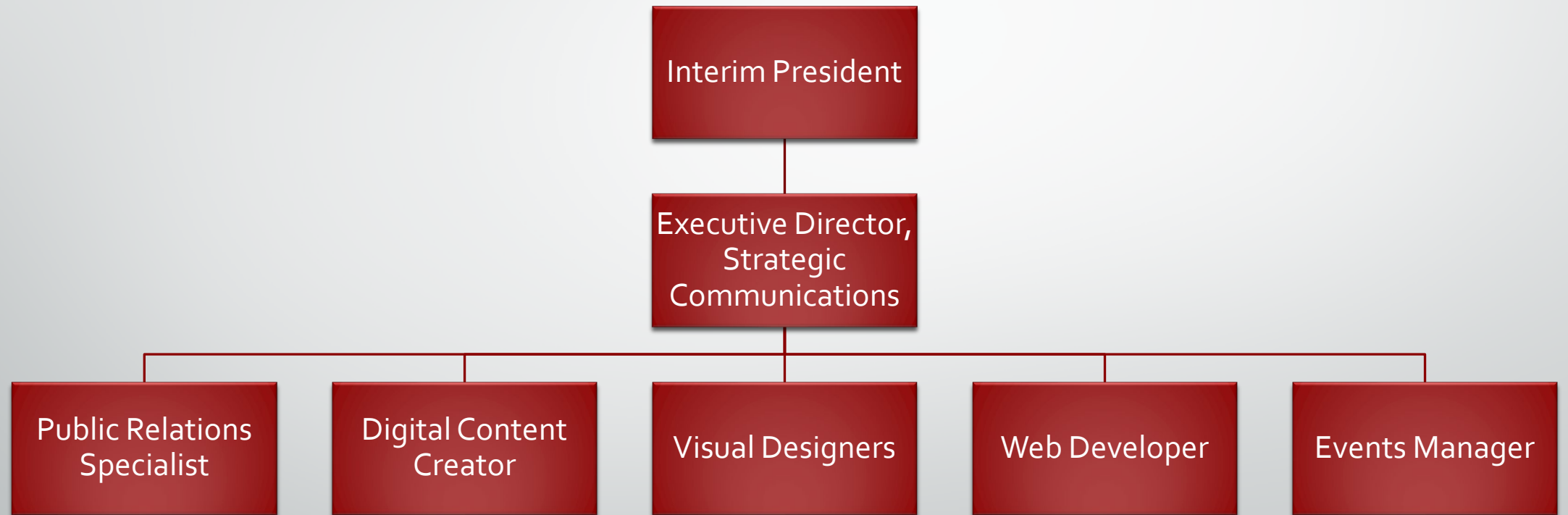
Business Services and Student Accounts & Billing



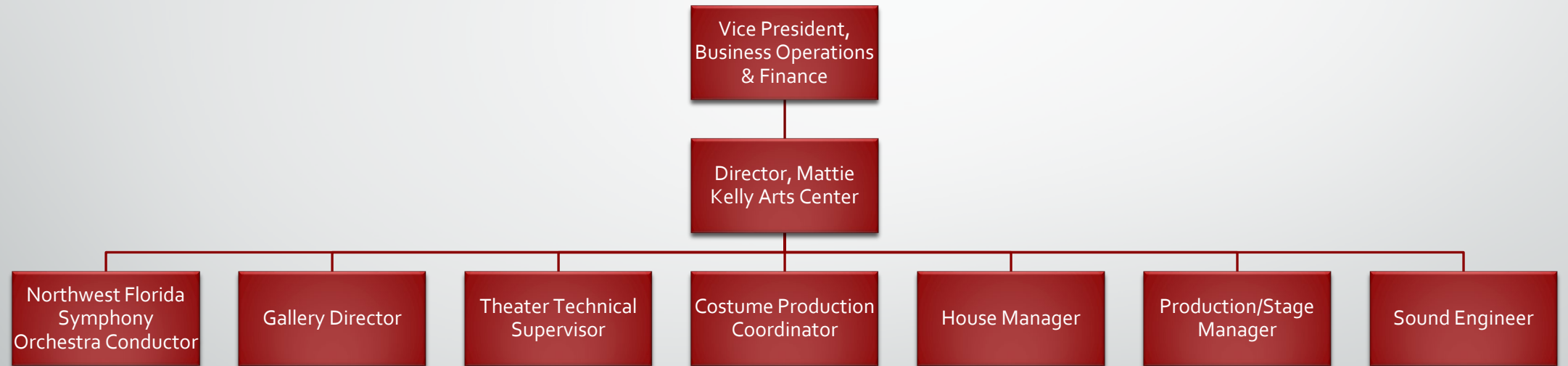
Information Technology



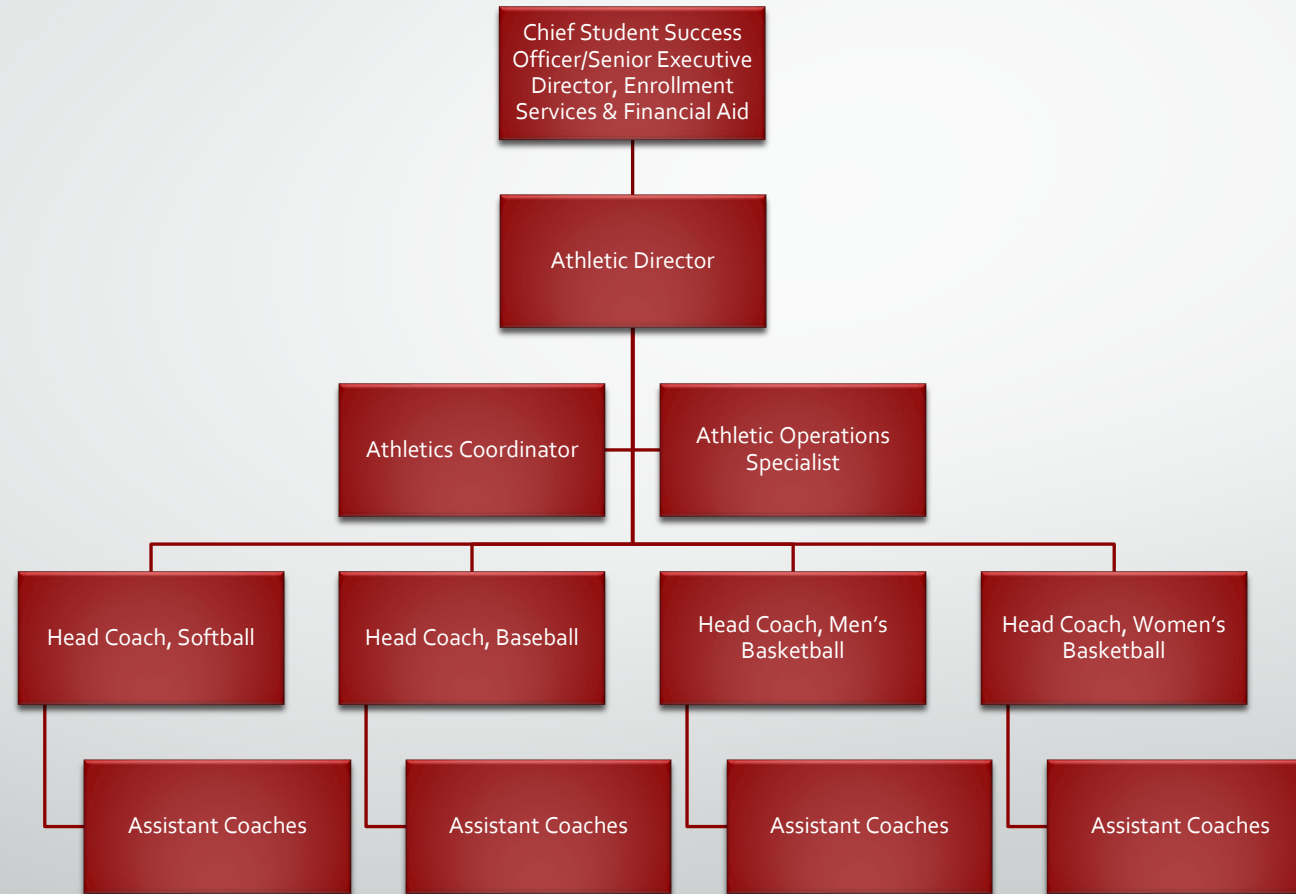
Strategic Communications



Mattie Kelly Arts Center



Raider Athletics



General Counsel, Human Resources, & Campus Safety

